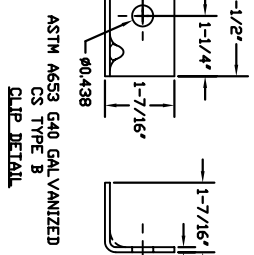
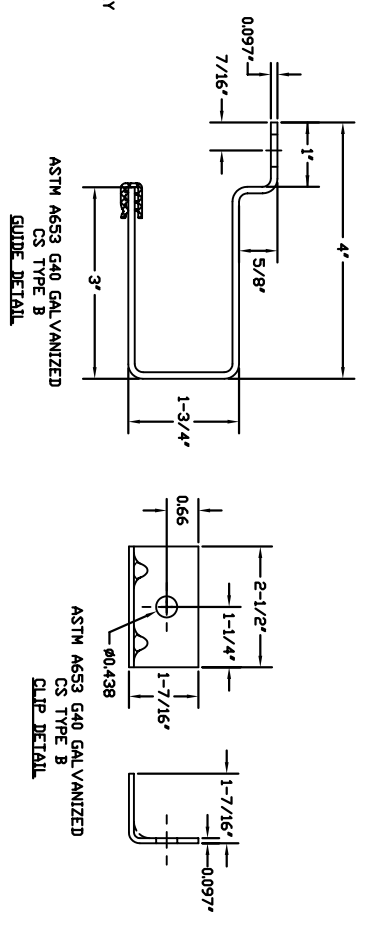
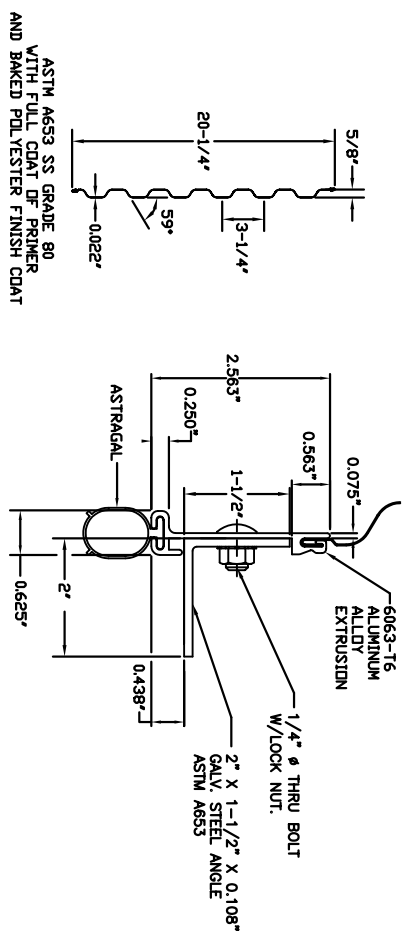
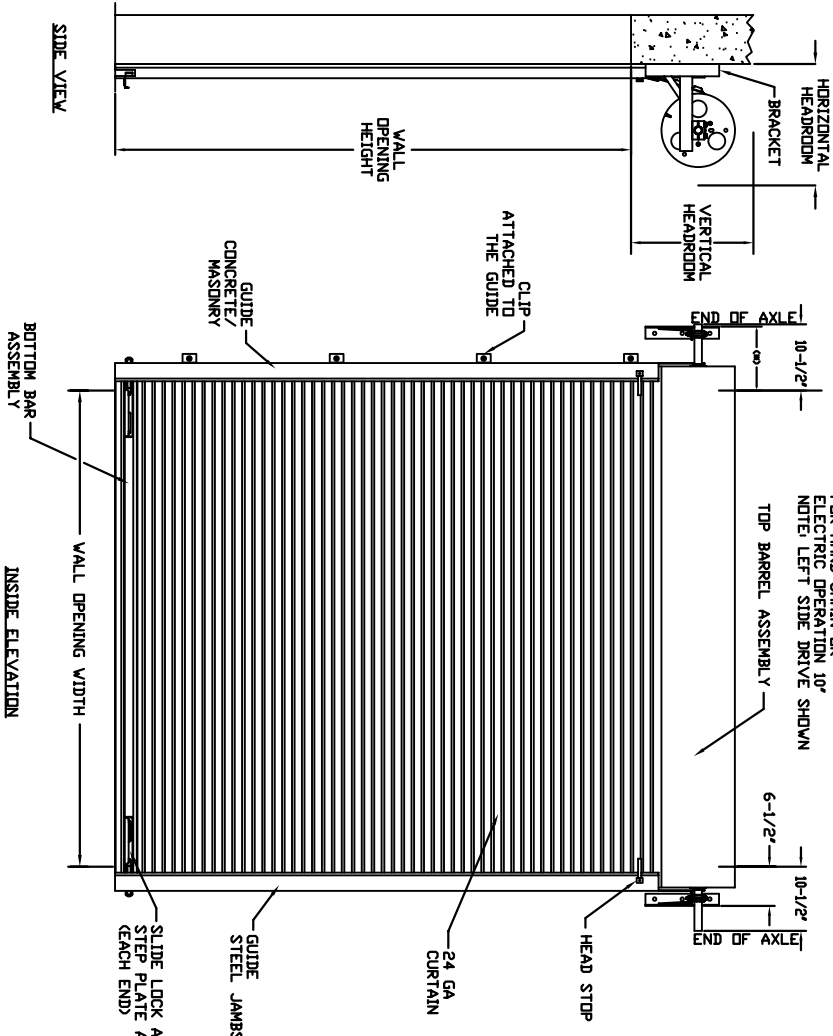


| OPENING HEIGHT | THRU 8'-0" | OVER 8'-0" THRU 10'-0" | OVER 10'-0" THRU 14'-0" |
|---------------------|------------|------------------------|-------------------------|
| VERTICAL HEADROOM | 18" | 20" | 21" |
| HORIZONTAL HEADROOM | 19" | 21" | 22" |

(*) FOR PUSH-UP OPERATION 6-1/2" FOR HAND CHAIN OR ELECTRIC OPERATION 10" NOTE: LEFT SIDE DRIVE SHOWN

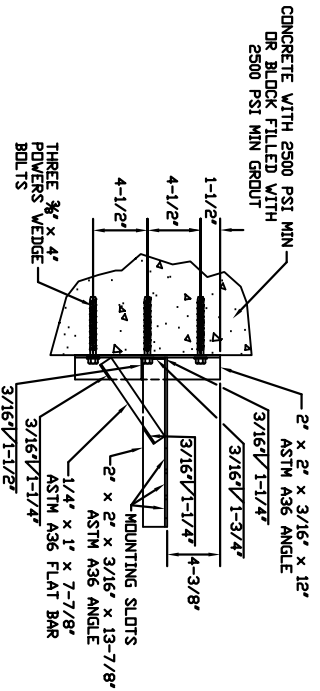
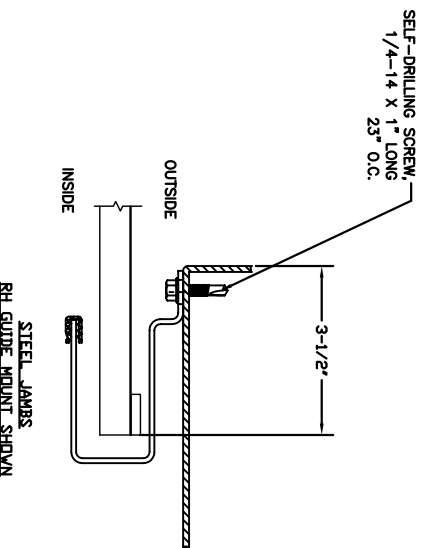
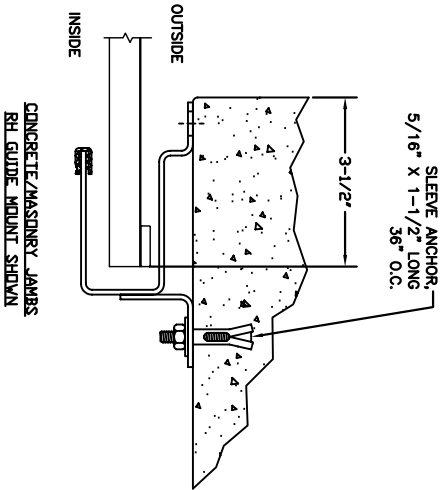


| REV | DESCRIPTION | DATE | APPROVAL |
|-----|------------------------------------|------|----------|
| 1 | REVISED PER CERTIFICATION 09/25/04 | A.S. | |
| 2 | NON CERTIFICATION UPDATE 02/21/07 | H.B. | |

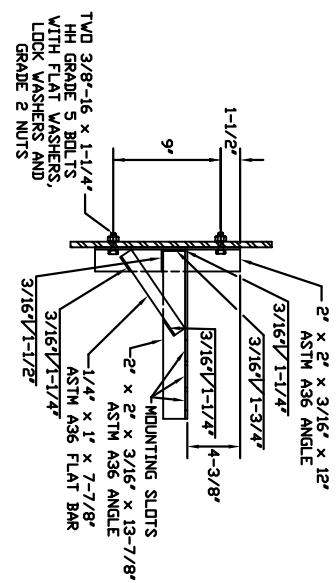
- GENERAL NOTES:**
- OPERATION TYPE MAY BE PUSH-UP, HAND CHAIN OR ELECTRIC.
 - DOORS SHALL BE PROVIDED WITH SLIDE LOCKS AT EACH END OF BOTTOM BAR, ENGAGING GUIDES IN THE LOCKED POSITION.
 - SERIES 4250 IS THE INSULATED VERSION OF SERIES 4000.
 - VISION PANELS ARE AVAILABLE.
 - IT IS THE CONTRACTOR'S RESPONSIBILITY TO VERIFY THE STRUCTURAL CAPACITY OF THE SUBSTRATE (WALL) TO RESIST THE LOADS IMPOSED BY THE ROLL-UP DOOR.

| | | | | | | | | | | | | | | | | | | | | | | | |
|---|-----------|-----------|-------------------------|----------------|------|--------|---------|------------------|-------|--|--|-------------------------|--|--|--|-----------------|---|------|----------|---------|------|---------|---------|
| <p>THESE COMPENSATIONAL DOCUMENTS SUBMITTED BY DBCI CONTAIN INFORMATION OF A PROPRIETARY NATURE AND MAY NOT BE REPRODUCED OR USED TO MANUFACTURE ANYTHING IN PART OR IN WHOLE FOR ANY PURPOSE OTHER THAN THAT WHICH IS NECESSARY FOR REPRODUCTION OF THIS DOCUMENT. PERMISSION IS GRANTED TO THE ENGINEER PERMITTED BY DBCI TO REPRODUCE THIS DOCUMENT IN ANY FORM.</p> | | | | | | | | | | | | | | | | | | | | | | | |
| <p>UNLESS OTHERWISE SPECIFIED DIMENSIONS ARE IN INCHES</p> <p>TOLERANCES ARE:</p> <table border="1"> <tr> <td>DECIMAL</td> <td>FRACTIONS</td> <td>ANGLES</td> <td>HOLE DIAMETERS</td> </tr> <tr> <td>±.03</td> <td>± 1/16</td> <td>± 0'30"</td> <td>UNDER .251 +.004</td> </tr> <tr> <td>±.005</td> <td></td> <td></td> <td>OVER .251 to .500 -.003</td> </tr> <tr> <td></td> <td></td> <td></td> <td>OVER .500 +.008</td> </tr> </table> | DECIMAL | FRACTIONS | ANGLES | HOLE DIAMETERS | ±.03 | ± 1/16 | ± 0'30" | UNDER .251 +.004 | ±.005 | | | OVER .251 to .500 -.003 | | | | OVER .500 +.008 | <table border="1"> <tr> <td>DATE</td> <td>APPROVAL</td> </tr> <tr> <td>2/21/07</td> <td>H.B.</td> </tr> <tr> <td>2/21/07</td> <td>DBCI B.</td> </tr> </table> | DATE | APPROVAL | 2/21/07 | H.B. | 2/21/07 | DBCI B. |
| DECIMAL | FRACTIONS | ANGLES | HOLE DIAMETERS | | | | | | | | | | | | | | | | | | | | |
| ±.03 | ± 1/16 | ± 0'30" | UNDER .251 +.004 | | | | | | | | | | | | | | | | | | | | |
| ±.005 | | | OVER .251 to .500 -.003 | | | | | | | | | | | | | | | | | | | | |
| | | | OVER .500 +.008 | | | | | | | | | | | | | | | | | | | | |
| DATE | APPROVAL | | | | | | | | | | | | | | | | | | | | | | |
| 2/21/07 | H.B. | | | | | | | | | | | | | | | | | | | | | | |
| 2/21/07 | DBCI B. | | | | | | | | | | | | | | | | | | | | | | |
| <p>24 GA., COMMERCIAL DOOR</p> <p>SERIES 4000/4250 DOOR ASSEMBLY</p> <p>PHONE NUMBER: 300-955-0001.01</p> | | | | | | | | | | | | | | | | | | | | | | | |
| <p>DBCI DOORS & BUILDING COMPONENTS</p> <p>10000 W. CHANDLER, AZ, HOUSTON, TX</p> <p>©2000 DBCI ALL RIGHTS RESERVED</p> | | | | | | | | | | | | | | | | | | | | | | | |

| REV | DESCRIPTION | DATE | APPROVAL |
|-----|---------------------------|----------|----------|
| 1 | RELEASED FOR CONSTRUCTION | 09/15/04 | A.S. |
| 2 | NON-CERTIFICATION UPDATE | 02/21/07 | H.B. |



DOOR MOUNTING BRACKET TO MASONRY DETAIL



DOOR MOUNTING BRACKET TO STEEL DETAIL

- GENERAL NOTES:**
- OPERATION TYPE MAY BE PUSH-UP, HAND CHAIN OR ELECTRIC.
 - DOORS SHALL BE PROVIDED WITH SLIDE LOCKS AT EACH END OF BOTTOM BAR, ENGAGING GUIDES IN THE LOCKED POSITION.
 - SERIES 4250 IS THE INSULATED VERSION OF SERIES 4000.
 - VISION PANELS ARE AVAILABLE.
 - IT IS THE CONTRACTOR'S RESPONSIBILITY TO VERIFY THE STRUCTURAL CAPACITY OF THE SUBSTRATE (JAMB) TO RESIST THE LOADS IMPOSED BY THE ROLL-UP DOOR.

THESE COMPENSATIONAL DOCUMENTS SUBMITTED BY DBCI CONTAIN INCORPORATION OF A PROPRIETARY NATURE AND MAY NOT BE REPRODUCED OR USED TO MANUFACTURE ANYTHING IN PART OR IN WHOLE FOR ANY PURPOSE OTHER THAN THAT WHICH IS NECESSARY FOR REPRODUCTION OF THIS DOCUMENT. PERMISSION IS GRANTED TO THE ENGINEER FOR REPRODUCTION OF THIS DOCUMENT IN ANY MEDIUM.

UNLESS OTHERWISE SPECIFIED DIMENSIONS ARE IN INCHES

| TOLERANCES ARE: | FRACTIONS | ANGLES | HOLE DIAMETERS |
|-----------------|-----------|---------|------------------|
| DECIMAL | ± 1/16 | ± 0°30' | UNDER .251 +.004 |
| XX ±.03 | | | -.003 |
| XXX ±.005 | | | +0.06 |
| | | | OVER .500 +.008 |

| | | | |
|-------------|-----|---------------|---------|
| UNIT NUMBER | N/A | APPROVED DATE | 2/21/07 |
| REVISION | N/A | DATE | 2/21/07 |
| APPROVED | | DATE | 2/21/07 |
| DESIGNER | | DATE | 2/21/07 |
| CHECKED | | DATE | 2/21/07 |
| APPROVED | | DATE | 2/21/07 |

24 GA., COMMERCIAL DOOR

SERIES 4000/4250 DOOR ASSEMBLY

DBCI

DOORS & BUILDING COMPONENTS
DISTRIBUTION, CHANGERS, AZ, HOUSTON, TX
©2000 DBCI ALL RIGHTS RESERVED

PHONE: 300-955-0001.02

REV: 2