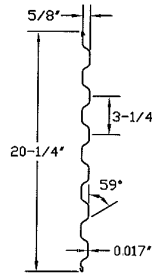
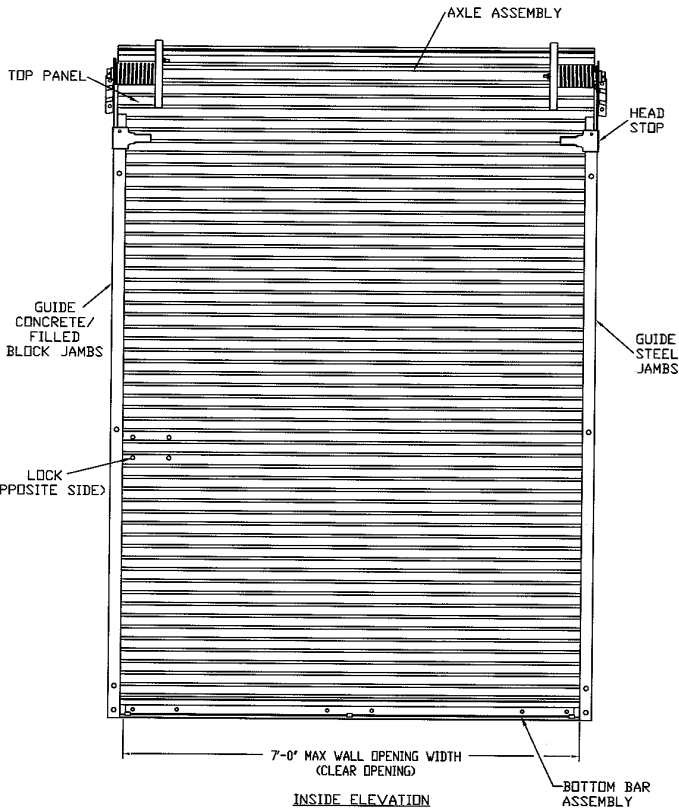
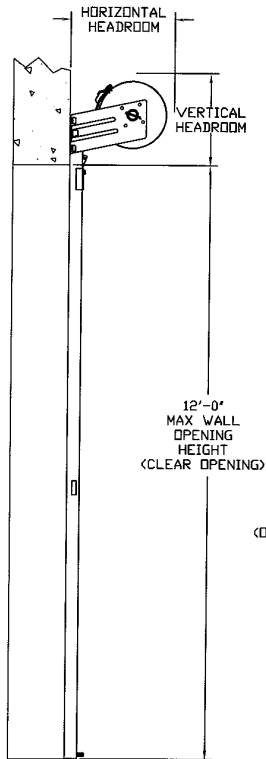
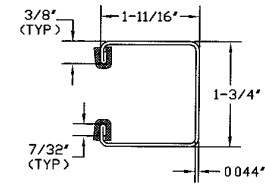


MINIMUM HEADROOM DIMENSIONS

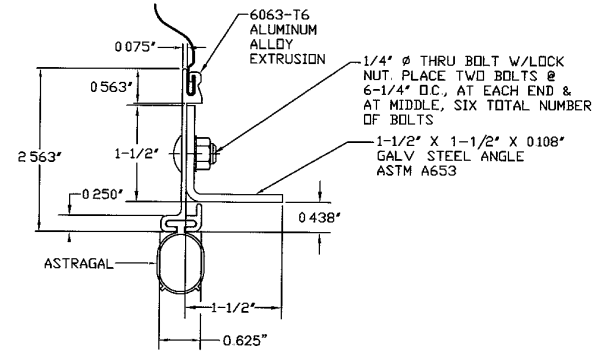
OPENING HEIGHT	THRU 7'-4"	OVER 7'-4" THRU 8'-8"	OVER 8'-8" THRU 10'-0"
VERTICAL HEADROOM	15-1/2"	16"	18"
HORIZONTAL HEADROOM	17-1/2"	18"	19"



ASTM A653 SS GRADE 80 WITH FULL COAT OF PRIMER AND BAKED POLYESTER FINISH COAT  
TYPICAL PANEL (26 GA.) DETAIL



ASTM A653 G40 GALVANIZED CS TYPE B  
GUIDE DETAIL

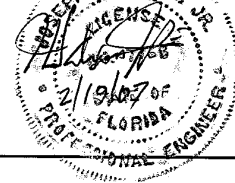


BOTTOM BAR ASSEMBLY DETAIL

CERTIFIED TESTING LABORATORIES

7252 Narcoossee Road, Orlando, Florida 32822  
Phone: (407) 384-7744 Fax: (407) 384-7751

JOSEPH H. DIXON, JR.  
PROFESSIONAL ENGINEER  
FLORIDA LICENSE NO. 4788



THESE CONFIDENTIAL DOCUMENTS SUBMITTED BY DBCI CONTAIN INFORMATION OF A PROPRIETARY NATURE AND MAY NOT BE REPRODUCED OR USED TO MANUFACTURE ANYTHING IN PART OR IN WHOLE FOR ANY PURPOSE OTHER THAN THAT WHICH IS NECESSARY FOR PREPARATION OF BIDS OR ENGINEERING WITHOUT THE EXPRESS PERMISSION OF DBCI WHICH MAY RECALL DOCUMENTS AT ANY TIME.

UNLESS OTHERWISE SPECIFIED DIMENSIONS ARE IN INCHES

TOLERANCES ARE:	DECIMAL	FRACTIONS	ANGLES	HOLE DIAMETERS
	.XX ±.03	± 1/16	± 0°30'	UNDER 251 +.004 -0.03
	XXX ±.005			251 to 500 +.006 -0.03
				OVER 500 +.008 -0.03

PART NUMBER	N/A	
MATERIAL	N/A	
APPLIED FINISH	N/A	
UNIT OF MEASURE	N/A	
APPROVAL	DATE	
DRAWN	H.B.	5/26/06
CHECKED	H.B.	6/06/06
APPROVED		

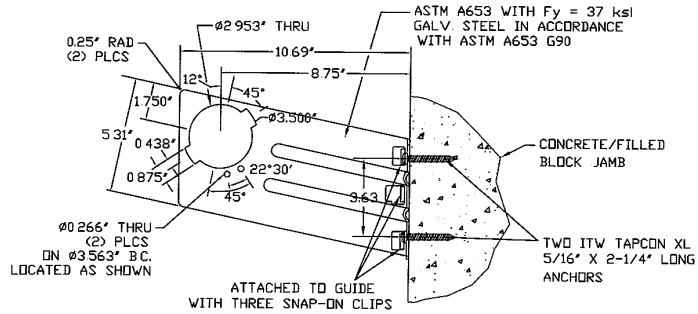
**DBCI** DOORS & BUILDING COMPONENTS  
DOUGLASVILLE, GA CHANDLER, AZ HOUSTON, TX  
© 2000 DBCI ALL RIGHTS RESERVED

26 GA WIND LOAD CERTIFIED, MAX SIZE 7'-0" x 12'-0"

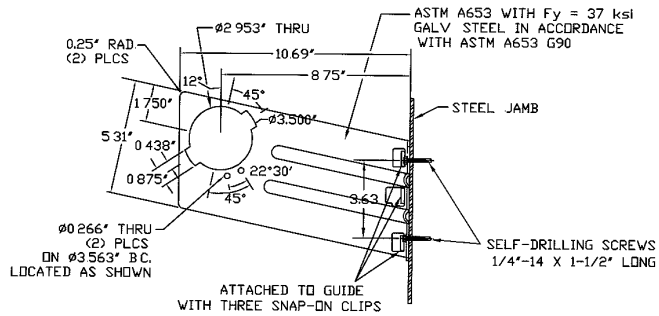
**SERIES 700 DOOR ASSEMBLY**

SIZE **D** DRAWING NUMBER **-300-150-0003,01** REV. **1**

SCALE: NONE SHEET 1 OF 2



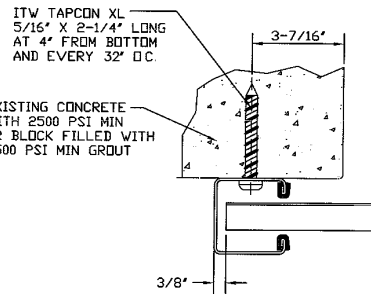
DOOR MOUNTING BRACKET TO MASONRY DETAIL



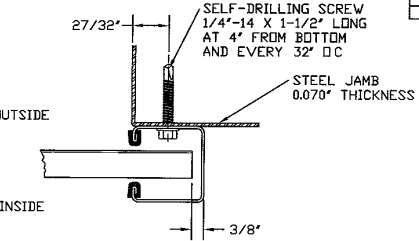
DOOR MOUNTING BRACKET TO STEEL DETAIL

**GENERAL NOTES:**

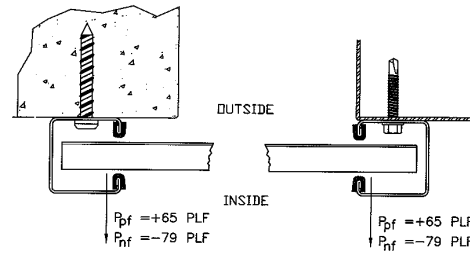
1. THE DBCI 700 SERIES ROLL-UP DOOR ASSEMBLY IS DESIGNED IN ACCORDANCE WITH ASCE 7-02, FBC 2004 WITH THE 2006 SUPPLEMENT AND IBC 2006 TO SAFELY RESIST THE WIND LOADS DENOTED BELOW:  
 POSITIVE DESIGN LOAD = + 17.9 PSF;  
 NEGATIVE DESIGN LOAD = - 21.7 PSF
2. THIS EVALUATION IS BASED ON CERTIFIED TESTING LABORATORIES TEST REPORT NUMBER CTLA-1534W-2.
3. THE TEST DOOR OPENING SIZE WAS 7'-0" x 7'-0". FOR DIFFERENT OPENING SIZES, THE CORRESPONDING DOOR SIZES ARE CALCULATED TO SAFELY RESIST THE DESIGN LOADS DENOTED IN THE DOOR SCHEDULE



FOR MASONRY JAMBS:  
 CURTAIN WIDTH=OPENING WIDTH+7 3/4"  
 CONCRETE/FILLED BLOCK JAMBS  
 LH GUIDE MOUNT SHOWN



FOR STEEL JAMBS:  
 CURTAIN WIDTH=OPENING WIDTH+3"  
 STEEL JAMBS  
 RH GUIDE MOUNT SHOWN



CONCRETE/FILLED BLOCK JAMBS  
 LH GUIDE MOUNT SHOWN

STEEL JAMBS  
 RH GUIDE MOUNT SHOWN

SUPERIMPOSED LOAD DIAGRAM

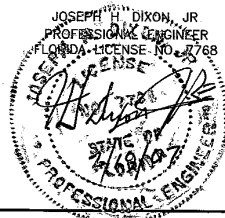
4. THIS PRODUCT EVALUATION IS GENERIC IT DOES NOT INCLUDE INFORMATION PREPARED FOR A SPECIFIC SITE
5. IT IS THE CONTRACTOR'S RESPONSIBILITY TO VERIFY THE STRUCTURAL CAPACITY OF THE SUBSTRATE (JAMB) TO RESIST THE LOADS IMPOSED BY THE ROLL-UP DOOR
6. ALL DOOR JAMBS (MASONRY OR STEEL) MUST BE DESIGNED ACCORDING TO THE APPLICABLE CODES TO RESIST THE FORCES SHOWN ABOVE
7. THE DOOR ASSEMBLY SHALL BE INSTALLED IN ACCORDANCE WITH THE MANUFACTURER'S INSTALLATION INSTRUCTIONS

REVISIONS			
REV	DESCRIPTION	DATE	APPROVAL
-	RELEASE PER IDW	6/05/06	H.B.
1	CERTIFICATION UPDATE	1/24/07	H.B.

DOOR SCHEDULE	
DOOR WIDTH	DESIGN PRESSURE (PSF)
≤ 3'-0"	+ 37.6
	- 45.6
4'-0"	+ 29.1
	- 35.3
5'-0"	+ 23.8
	- 28.8
6'-0"	+ 20.1
	- 24.3
7'-0"	+ 17.9
	- 21.7

**CERTIFIED TESTING LABORATORIES**

7252 Narcoossee Road, Orlando, Florida 32822  
 Phone: (407) 384-7744 Fax: (407) 384-7751



THESE CONFIDENTIAL DOCUMENTS SUBMITTED BY DBCI CONTAIN INFORMATION OF A PROPRIETARY NATURE AND MAY NOT BE REPRODUCED OR USED TO MANUFACTURE ANYTHING IN PART OR IN WHOLE FOR ANY PURPOSE OTHER THAN THAT WHICH IS NECESSARY FOR PREPARATION OF BIDS OR ENGINEERING WITHOUT THE EXPRESS PERMISSION OF DBCI WHICH MAY RECALL DOCUMENTS AT ANY TIME.

UNLESS OTHERWISE SPECIFIED DIMENSIONS ARE IN INCHES  
 TOLERANCES ARE:

DECIMAL	FRACTIONS	ANGLES	HOLE DIAMETERS
.XX ±0.03	± 1/16	± 0°30'	UNDER 251 +.004 -0.03
XXX ±0.05			251 to 500 +.006 -0.03
			OVER 500 +.008 -0.03

PART NUMBER	N/A
MATERIAL	N/A
APPLIED PRESSURE	N/A
UNIT OF MEASURE	N/A
APPROVALS	DATE
DRAWN H.B.	5/26/06
CHECKED H.B.	6/06/06
APPROVED	

DOORS & BUILDING COMPONENTS  
 DOUGLASVILLE, GA CHANDLER, AZ HOUSTON, TX  
 ©2006 DBCI ALL RIGHTS RESERVED

26 GA WIND LOAD CERTIFIED, MAX SIZE 7'-0" x 12'-0"

**SERIES 700 DOOR ASSEMBLY**

SIZE: D DRAWING NUMBER: -300-150-0003.02  
 SCALE: NONE SHEET 2 OF 2