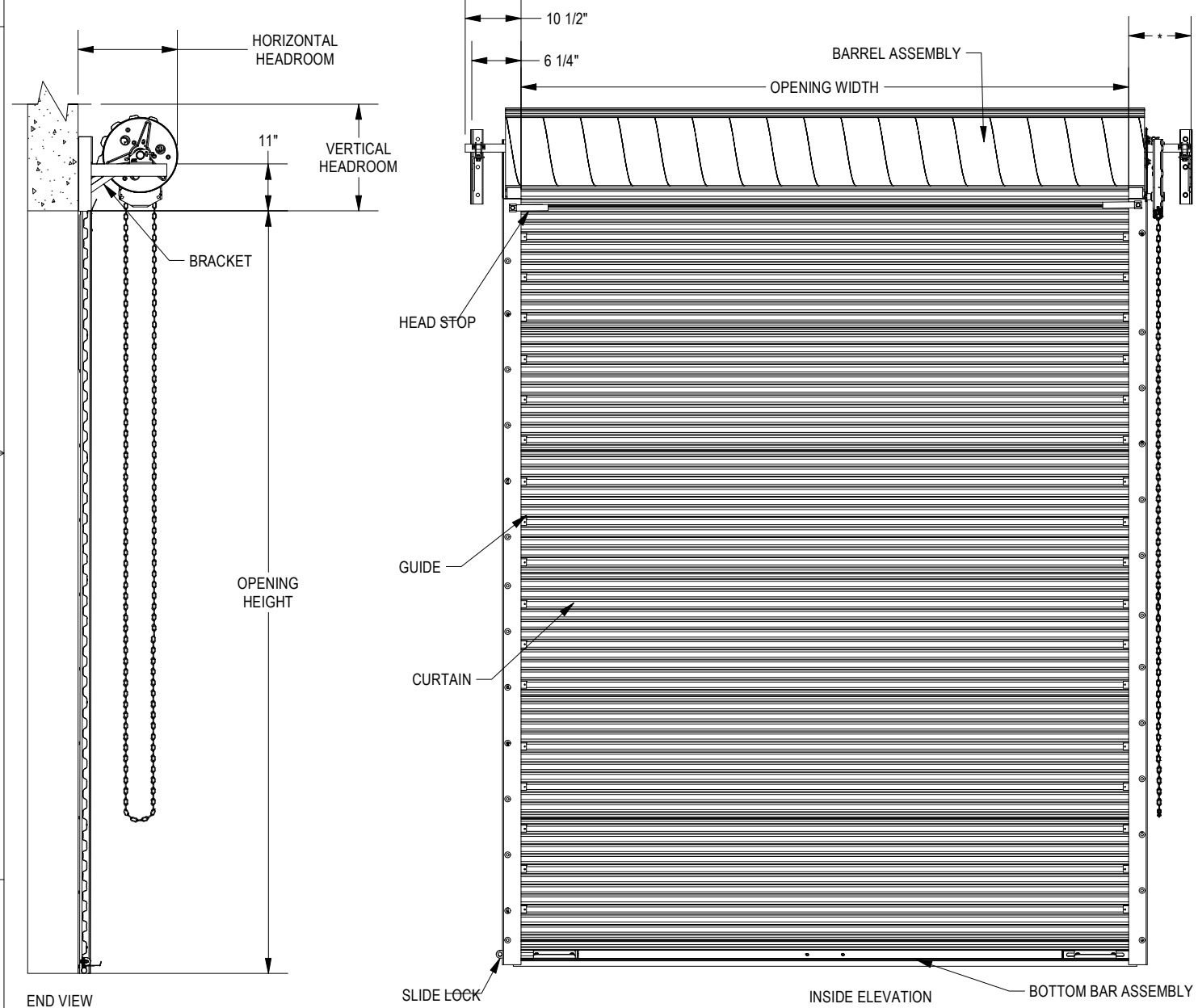
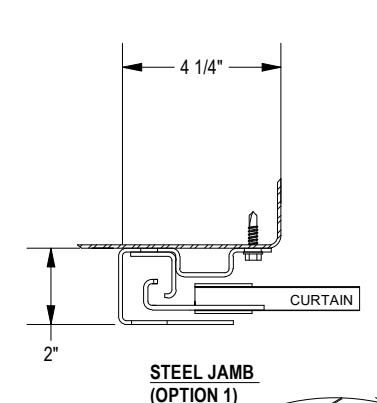
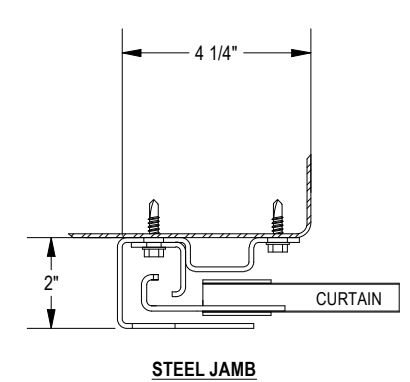
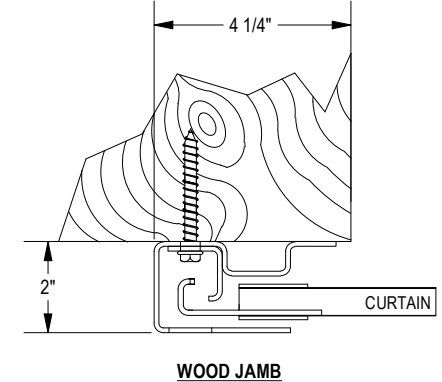
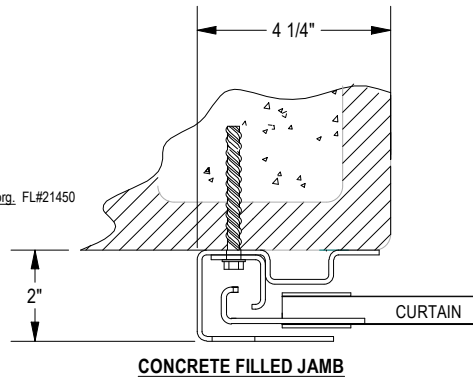


GENERAL NOTES:

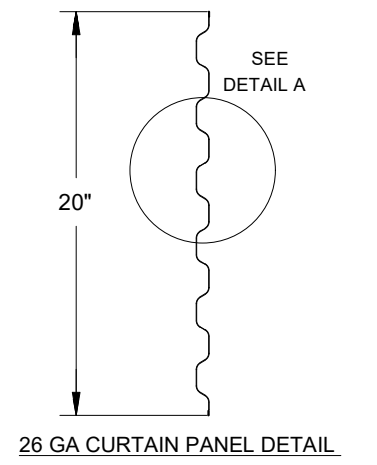
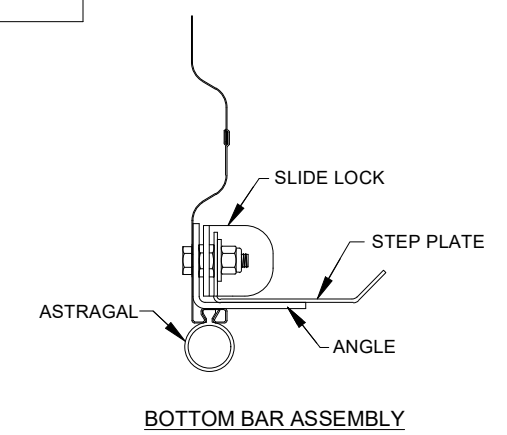
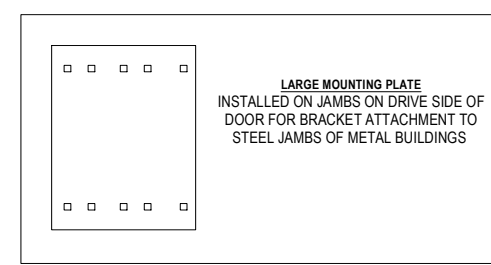
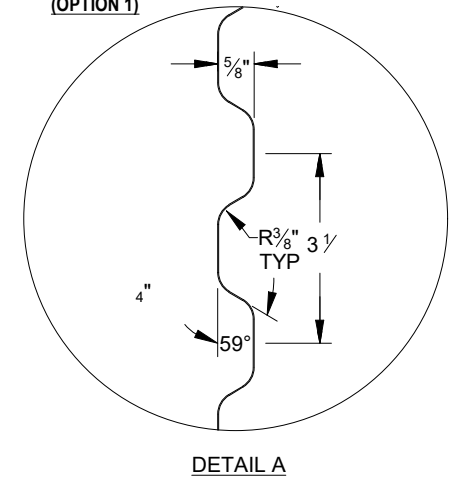
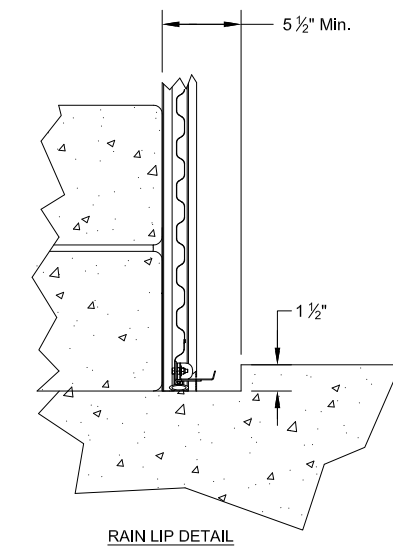
- OPERATION TYPE MAY BE PUSH-UP, HAND CHAIN OR ELECTRIC.
- FOR CRITICAL FITS DUE TO REDUCED AVAILABLE HEADROOM OR SIDEROOM CLEARANCES, CONSULT FACTORY.
- CLEARANCES SHOWN ARE MAXIMUMS. LESSER CLEARANCES MAY BE POSSIBLE.
- UNLESS OTHERWISE NOTED, DOORS SHALL BE PROVIDED WITH SLIDE LOCKS AT EACH END OF BOTTOM BAR, ENGAGING GUIDES IN THE LOCKED POSITION.
- ALL OPENING PREPARATION, ELECTRICAL POWER AND FIELD PAINTING SHALL BE PROVIDED BY OTHERS.
- SERIES 3100i IS AN INSULATED SERIES 3100
- CURTAIN FINISH SHALL BE SILICONE POLYESTER PRE-PAINT OVER GALVANIZED GRADE 80 STEEL.
- MODEL 3100 IS A STATE OF FLORIDA APPROVED WINDLOAD PRODUCT. PRODUCT EVALUATIONS AND STAMPED DRAWINGS ARE ACCESSIBLE VIA www.floridabuilding.org, FL#21450
- PLEASE NOTE: STANDARD GUIDE MANUFACTURING METHOD FOR STEEL JAMBS PER MOUNTING OPTION 1.
- MAXIMUM OPEN SIZE: 20'-0" X 18'-0"
- RAIN LIP CLEARANCE DIMENSION OUTSIDE OF GUIDE = 6-1/4" MINIMUM.

BRACKET ATTACHMENT
 STEEL JAMBS: 3/8" - 16 X 1 1/4" HEX BOLT AND NUT.
 CONCRETE/MASONRY JAMBS: 3/8" X 4" DEWALT WEDGE BOLT + SCREW ANCHORS
 WOOD JAMBS: 3/8" X 3" LAG SCREW.

(*) FOR PUSH-UP OPERATION.....6 1/4"
 FOR HAND CHAIN OPERATION.....10"
 FOR ELECTRIC OPERATION.....10"
 FOR ELECTRIC OPERATION.....8 1/2"
 FOR OUTSIDE OF CHAIN DRIVE.....8 3/4"



HEADROOM REQUIREMENT		
OPENING HEIGHT	VERTICAL HEADROOM	HORIZONTAL HEADROOM
THRU 8'-0"	19"	20"
THRU 10'-0"	21"	21"
THRU 14'-0"	23"	23"
THRU 16'-0"	24"	24"
THRU 18'-0"	25"	25"



814009-0001 02/06/2024

COMMERCIAL DOOR: 3100/3100I

CUSTOMER NUMBER:		DATE:
CUSTOMER NAME:		CONTACT:
PROJECT NAME:		
PROJECT LOCATION:		
PLANT:		SALESPERSON:
DRAWN BY:		DRAWN BY DATE:
DRAWING NUMBER:		SHT: OF:

FACTORY ORDER NUMBER	DOOR SERIES	QTY	OPENING SIZE		JAMB TYPE			OUTSIDE CURTAIN COLOR	OPERATION			OPERATION HAND	WEATHERSTRIP			ADDED OPTIONS
			WIDTH	HEIGHT	STEEL	CONC./MAS	WOOD		PUSH UP	REDUCED CHAIN	ELECTRIC		TOP	HEADER	SIDE	

NOTES: