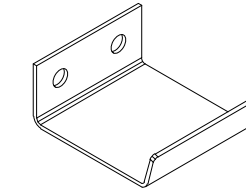
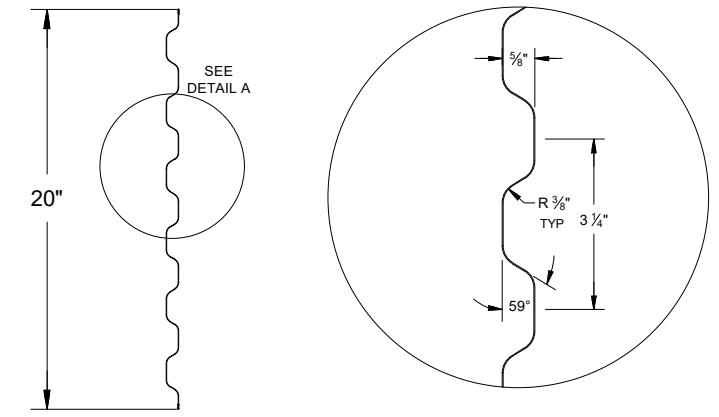


GENERAL NOTES:

1. OPERATION TYPE TO BE PUSH-UP.
2. FOR CRITICAL FITS DUE TO REDUCED AVAILABLE HEADROOM OR SIDEROOM CLEARANCES, CONSULT FACTORY.
3. CLEARANCES SHOWN ARE MAXIMUMS. LESSER CLEARANCES MAY BE POSSIBLE.
4. UNLESS OTHERWISE NOTED, LOCKING SHALL BE BY SINGLE MINI SLIDE LATCH BOLTED TO CURTAIN AND SUITABLE FOR DOUBLE PADLOCKS AND SINGLE CYLINDER LOCK BY OTHERS.
5. LATCH COVER IS YELLOW ZINC.
6. *1 3/4" FOR DOORS WITH 2 1/2" CURTAIN ADD. 2" FOR DOORS WITH 3 CURTAIN ADD.*
7. CURTAIN FINISH SHALL BE SILICONE POLYESTER PRE-PAINT OVER GALVANIZED GRADE 80 STEEL.
8. GUIDES, BRACKETS, BOTTOM BAR ANGLE AND HEAD STOPS ARE ZINC COATED.
9. MAXIMUM OPENING SIZE: 10'-0" X 10'-0".



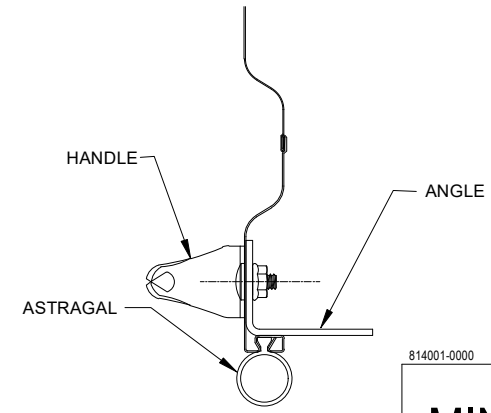
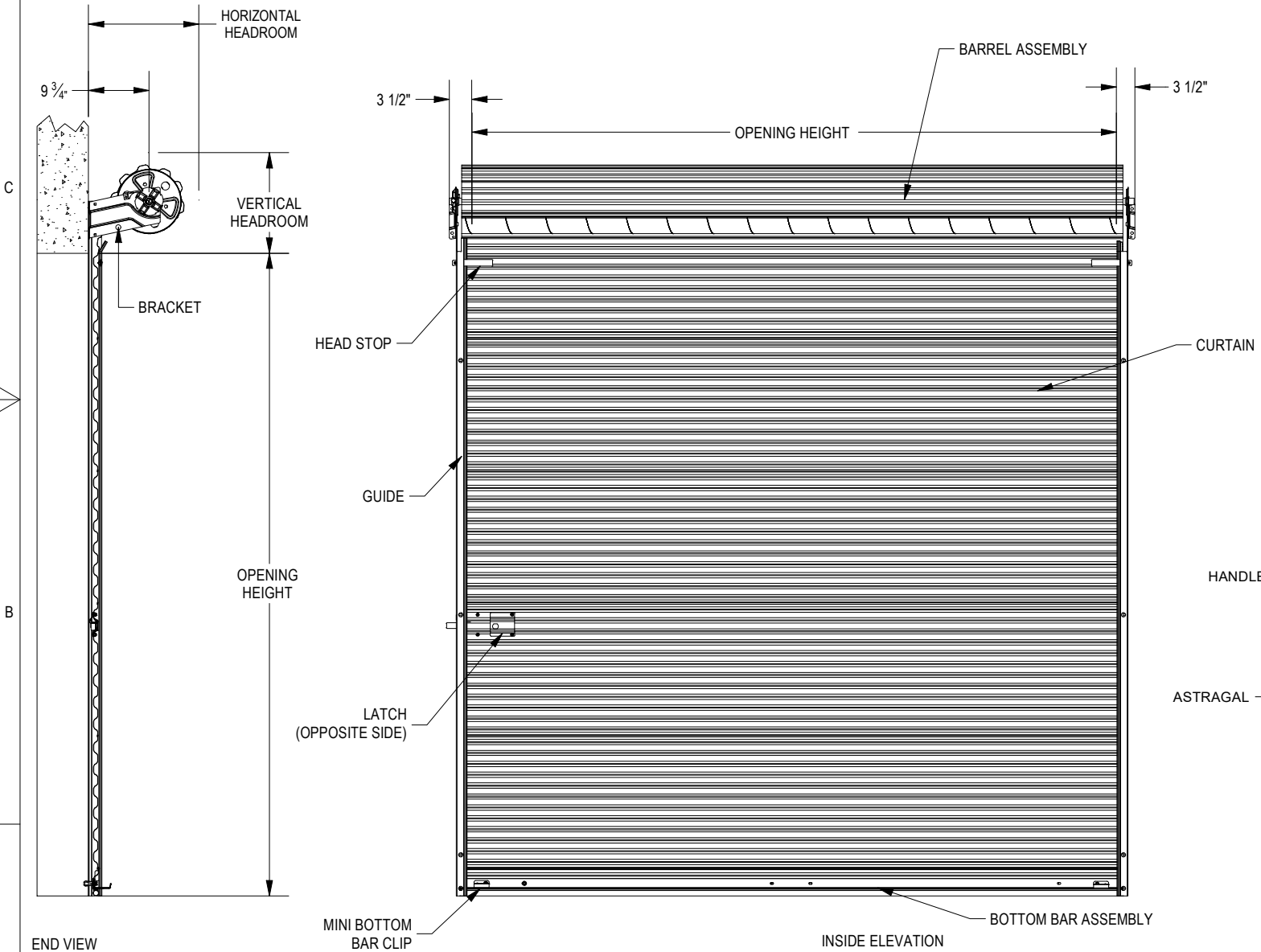
MINI BOTTOM BAR CLIP



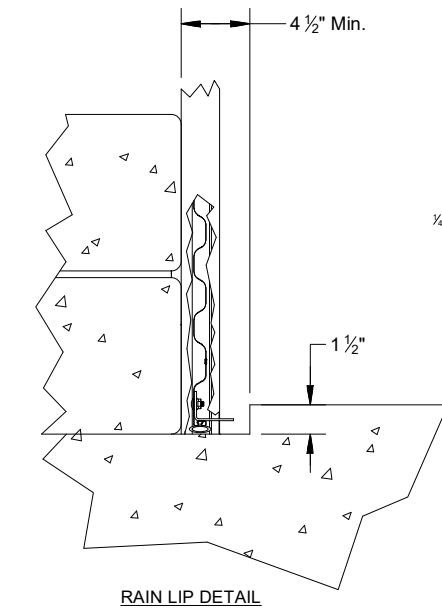
26 GA CURTAIN PANEL DETAIL

DETAIL A

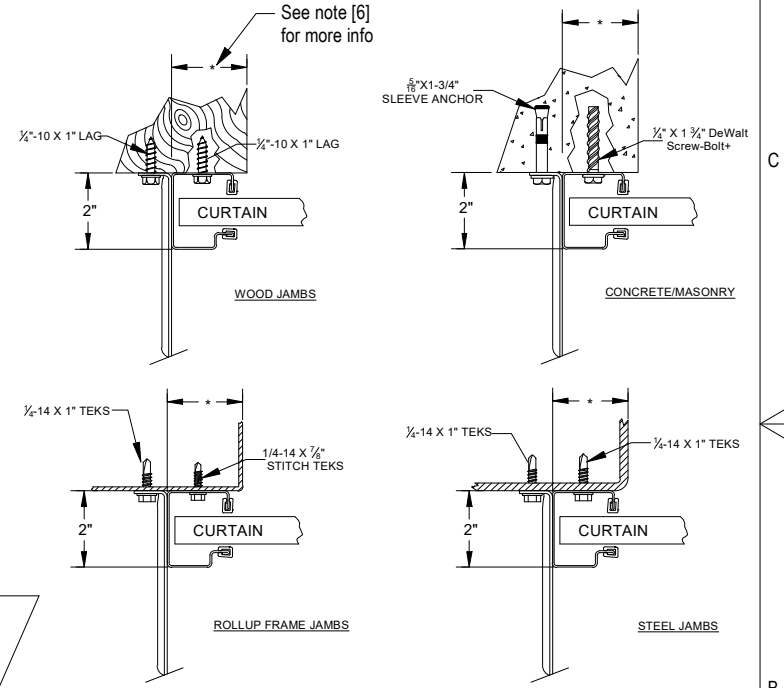
| HEADROOM REQUIREMENT | | |
|------------------------|-------------------|---------------------|
| OPENING HEIGHT | VERTICAL HEADROOM | HORIZONTAL HEADROOM |
| THRU 7'-4" | 15 1/2" | 17" |
| OVER 7'-4" THRU 8'-8" | 16" | 17 1/2" |
| OVER 8'-8" THRU 10'-0" | 17" | 18 1/2" |



BOTTOM BAR ASSEMBLY



RAIN LIP DETAIL



814001-0000

11/16/2022

MINI SERIES DOOR: 650DB/651

| | | | |
|-------------------|--|----------------|--|
| CUSTOMER NUMBER: | | DATE: | |
| CUSTOMER NAME: | | CONTACT: | |
| PROJECT NAME: | | | |
| PROJECT LOCATION: | | | |
| PLANT: | | SALESPERSON: | |
| DRAWN BY: | | DRAWN BY DATE: | |
| DRAWING NUMBER: | | SHT: OF: | |



| FACTORY ORDER NUMBER | DOOR SERIES | QTY | OPENING SIZE | | JAMB TYPE | | | OUTSIDE CURTAIN COLOR | OPERATION | | | OPERATION HAND | WEATHERSTRIP | | | ADDED OPTIONS |
|----------------------|-------------|-----|--------------|--------|-----------|-----------|------|-----------------------|-----------|---------------|----------|----------------|--------------|--------|------|---------------|
| | | | WIDTH | HEIGHT | STEEL | CONC./MAS | WOOD | | PUSH UP | REDUCED CHAIN | ELECTRIC | | TOP | HEADER | SIDE | |
| | | | | | | | | | | | | | | | | |

NOTES: