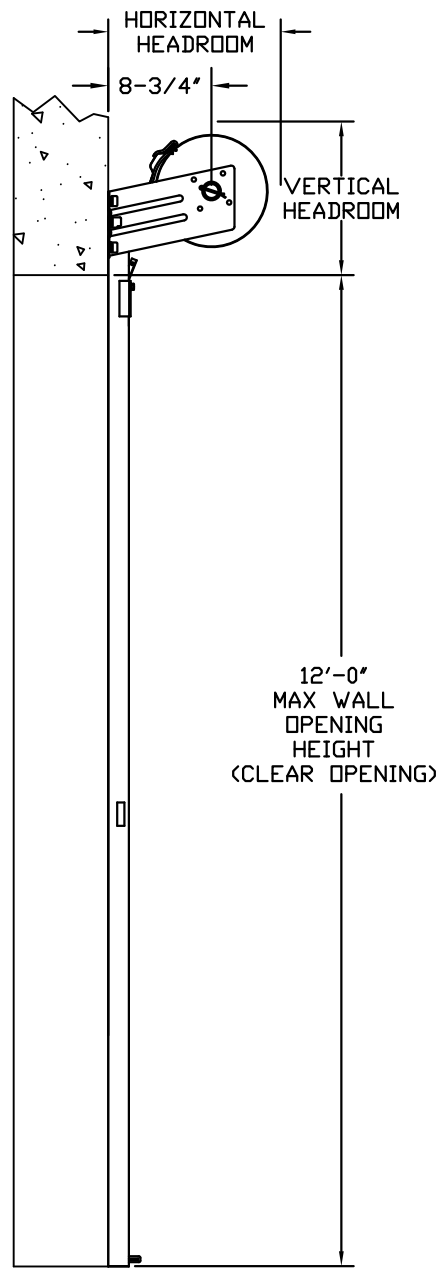
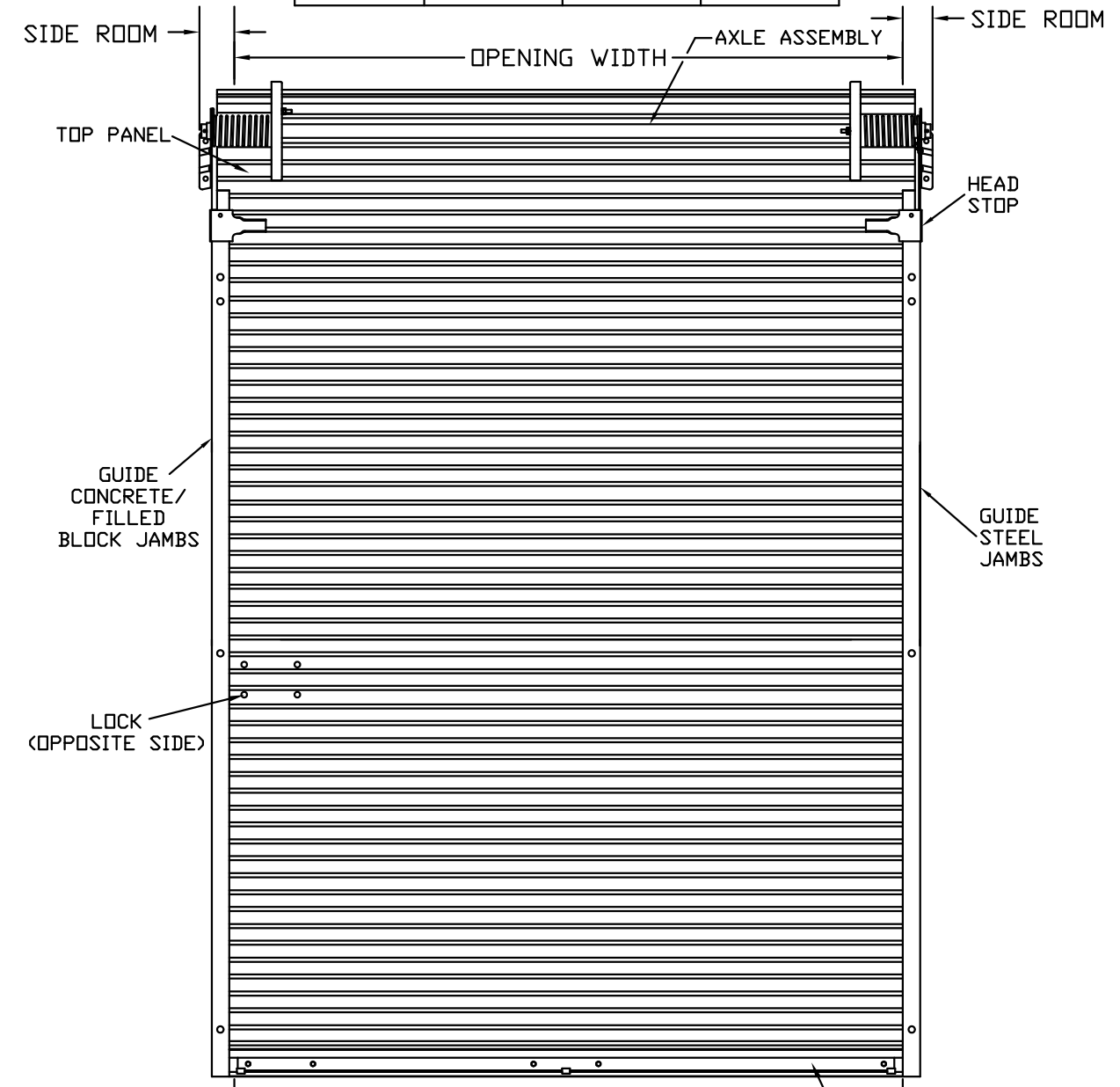


REVISIONS			
REV	DESCRIPTION	DATE	APPROVAL
1	MODIFIED FOR TDI	12-19-13	B.A.

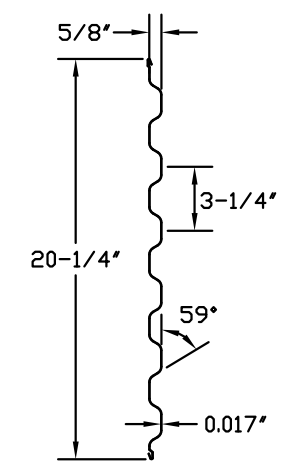
OPENING HEIGHT	MINIMUM DIMENSIONS		
	THRU 7'-4"	OVER 7'-4" THRU 8'-8"	OVER 8'-8" THRU 10'-0"
VERTICAL HEADROOM	15-1/2"	16"	18"
HORIZONTAL HEADROOM	17"	17-1/2"	19-1/4"
SIDE ROOM	3-1/4"	3-1/4"	3-1/2"



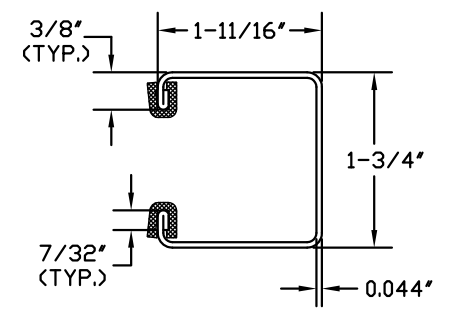
SIDE VIEW



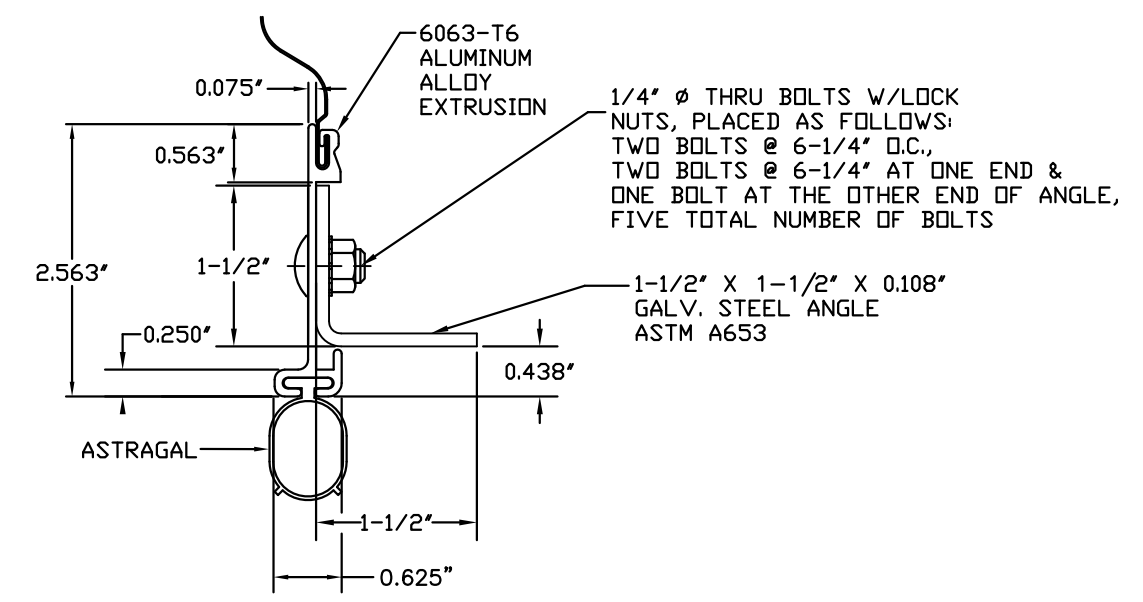
WIND LOAD CERTIFIED UP TO 8'-8" WALL OPENING WIDTH  
INSIDE ELEVATION



ASTM A653 SS GRADE 80 WITH FULL COAT OF PRIMER AND BAKED POLYESTER FINISH COAT  
TYPICAL PANEL (26 GA.) DETAIL



ASTM A653 G40 GALVANIZED CS TYPE B  
GUIDE DETAIL



BOTTOM BAR ASSEMBLY DETAIL

JOHN E. SCATES  
3121 FAIRGATE  
CARROLLTON, TX 75007  
  
FL PE 51737  
TX PE 56308/F-2203

THESE CONFIDENTIAL DOCUMENTS SUBMITTED BY DBCI CONTAIN INFORMATION OF A PROPRIETARY NATURE AND MAY NOT BE REPRODUCED OR USED TO MANUFACTURE ANYTHING IN PART OR IN WHOLE FOR ANY PURPOSE OTHER THAN THAT WHICH IS NECESSARY FOR PREPARATION OF BIDS OR ENGINEERING WITHOUT THE EXPRESS PERMISSION OF DBCI WHICH MAY RECALL DOCUMENTS AT ANY TIME.

PROFESSIONAL ENGINEER'S SEAL PROVIDED ONLY FOR VERIFICATION OF WINDLOAD CONSTRUCTION DETAILS.

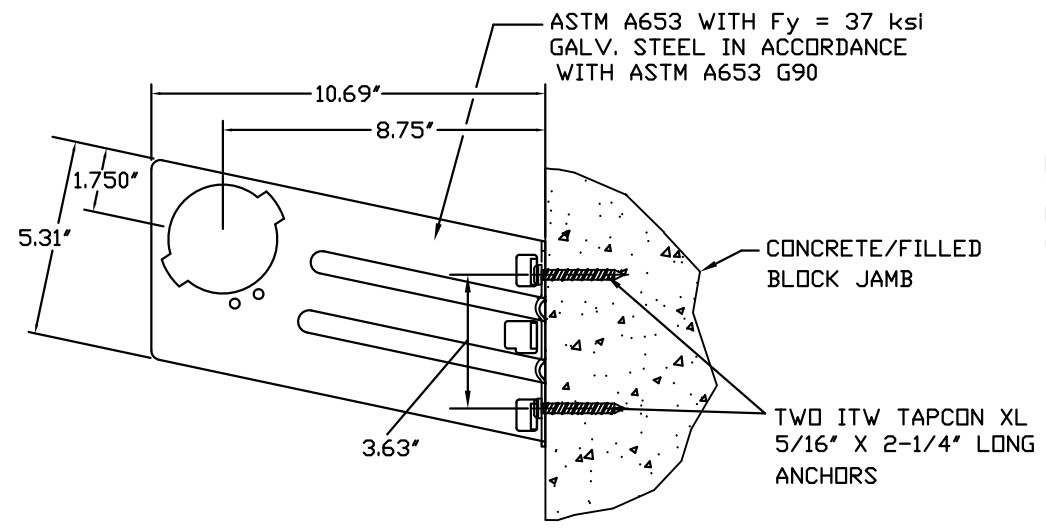
PART NUMBER: N/A	
MATERIAL: N/A	
APPLIED FINISH: N/A	
UNIT OF MEASURE: N/A	
APPROVALS	DATE
DRAWN H.B.	5/29/07
CHECKED H.B.	5/30/07
APPROVED	

**DBCI** DOORS & BUILDING COMPONENTS  
DOUGLASVILLE, GA CHANDLER, AZ HOUSTON, TX  
©2000 DBCI ALL RIGHTS RESERVED

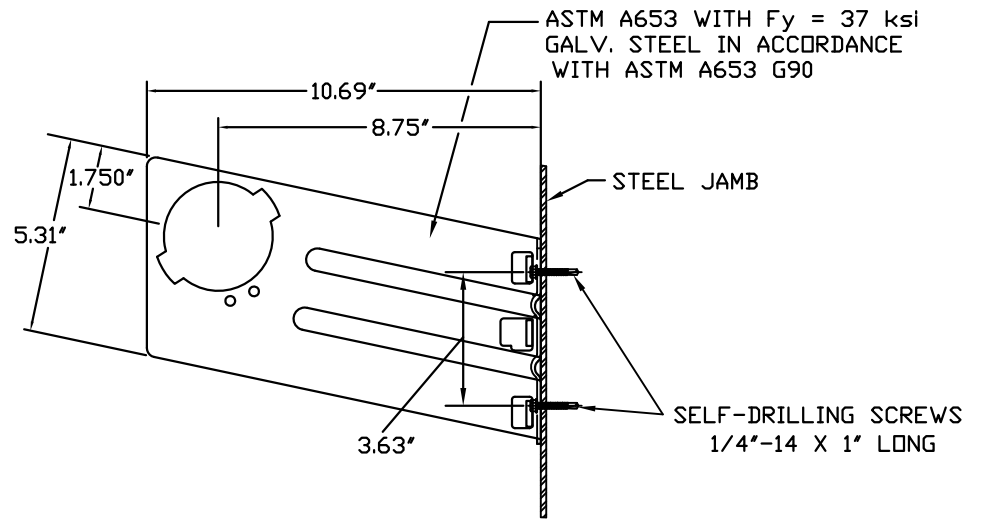
26 GA. WIND LOAD UP TO 8'-8" x 12'-0" SIZE  
**SERIES 650 DOOR ASSEMBLY**

SIZE <b>B</b>	DRAWING NUMBER -400-005-0074.02	REV. 1
SCALE: NONE	SHEET 1	OF 2

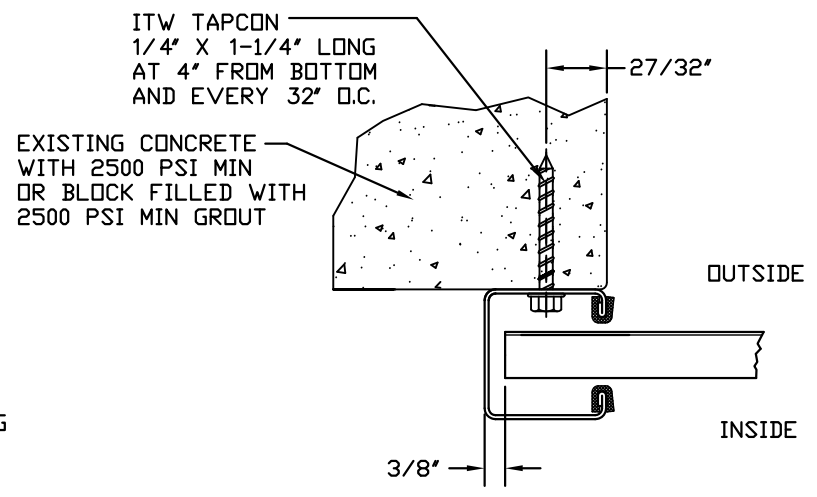
REVISIONS			
REV	DESCRIPTION	DATE	APPROVAL
1	MODIFIED FOR TDI	12-19-13	B.A.



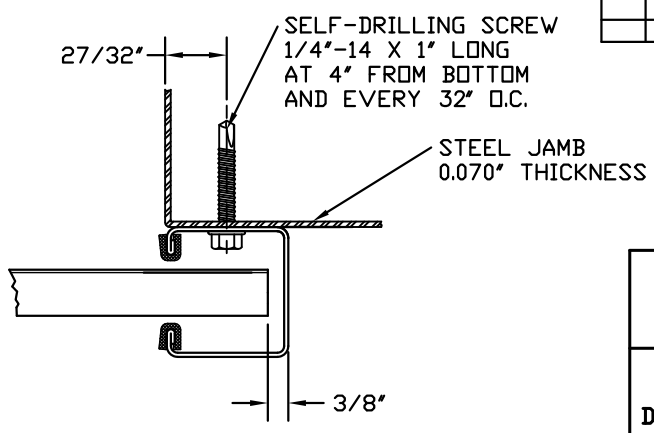
DOOR MOUNTING BRACKET TO MASONRY DETAIL



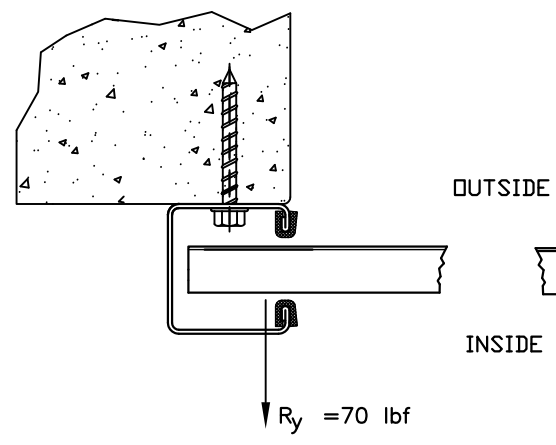
DOOR MOUNTING BRACKET TO STEEL DETAIL



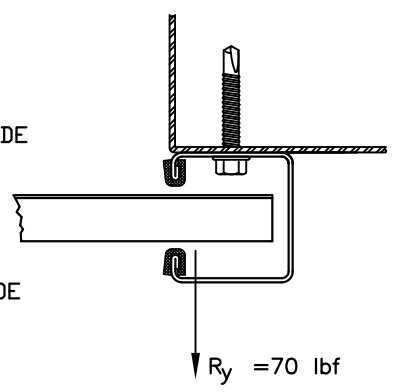
FOR MASONRY JAMBS:  
CURTAIN WIDTH=OPENING WIDTH+3'  
CONCRETE/FILLED BLOCK JAMBS  
LH GUIDE MOUNT SHOWN



FOR STEEL JAMBS:  
CURTAIN WIDTH=OPENING WIDTH+3'  
STEEL JAMBS  
RH GUIDE MOUNT SHOWN



CONCRETE/FILLED BLOCK JAMBS  
LH GUIDE MOUNT SHOWN



STEEL JAMBS  
RH GUIDE MOUNT SHOWN

SUPERIMPOSED LOAD DIAGRAM

DOOR SCHEDULE	
DOOR WIDTH	DESIGN PRESSURE (PSF)
≤ 3'-0"	+ 35.3
	- 38.4
4'-0"	+ 27.8
	- 30.2
5'-0"	+ 22.8
	- 24.8
6'-0"	+ 19.4
	- 21.1
7'-0"	+ 16.8
	- 18.3
8'-0"	+ 14.9
	- 16.2
8'-8"	+ 13.9
	- 15.1

GENERAL NOTES:

1. THIS DOOR EVALUATED IN ACCORDANCE WITH TEST METHODS ASTM E330-02 AND ANSI/DASMA 108-05.
2. THIS PRODUCT EVALUATION IS GENERIC. IT DOES NOT INCLUDE INFORMATION PREPARED FOR A SPECIFIC SITE.
3. IT IS THE CONTRACTOR'S RESPONSIBILITY TO VERIFY THE STRUCTURAL CAPACITY OF THE SUBSTRATE (JAMB) TO RESIST THE LOADS IMPOSED BY THE ROLL-UP DOOR.
4. ALL DOOR JAMBS (MASONRY OR STEEL) MUST BE DESIGNED TO RESIST THE FORCES SHOWN IN SUPERIMPOSED LOAD DIAGRAM.
5. THE DOOR ASSEMBLY SHALL BE INSTALLED IN ACCORDANCE WITH THE MANUFACTURER'S INSTALLATION INSTRUCTIONS.

<p>JOHN E. SCATES 3121 FAIRGATE CARROLTON, TX 75007</p> <p>FL PE 51737 TX PE 56308/F-2203</p>	<p>THESE CONFIDENTIAL DOCUMENTS SUBMITTED BY DBCI CONTAIN INFORMATION OF A PROPRIETARY NATURE AND MAY NOT BE REPRODUCED OR USED TO MANUFACTURE ANYTHING IN PART OR IN WHOLE FOR ANY PURPOSE OTHER THAN THAT WHICH IS NECESSARY FOR PREPARATION OF BIDS OR ENGINEERING WITHOUT THE EXPRESS PERMISSION OF DBCI WHICH MAY RECALL DOCUMENTS AT ANY TIME.</p>	<p>PART NUMBER: N/A</p>	<p>DOORS &amp; BUILDING COMPONENTS DOUGLASVILLE, GA CHANDLER, AZ HOUSTON, TX ©2000 DBCI ALL RIGHTS RESERVED</p>								
		<p>MATERIAL: N/A</p>									
		<p>APPLIED FINISH: N/A</p>	<p>26 GA. WIND LOAD UP TO 8'-8" x 12'-0" SIZE</p> <p>SERIES 650 DOOR ASSEMBLY</p>								
		<p>UNIT OF MEASURE: N/A</p>									
		<table border="1"> <tr> <th>APPROVALS</th> <th>DATE</th> </tr> <tr> <td>DRAWN H.B.</td> <td>5/29/07</td> </tr> <tr> <td>CHECKED H.B.</td> <td>5/30/07</td> </tr> <tr> <td>APPROVED</td> <td></td> </tr> </table>	APPROVALS	DATE	DRAWN H.B.	5/29/07	CHECKED H.B.	5/30/07	APPROVED		<p>SIZE: B</p> <p>DRAWING NUMBER: -400-005-0074.02</p> <p>REV. 1</p>
APPROVALS	DATE										
DRAWN H.B.	5/29/07										
CHECKED H.B.	5/30/07										
APPROVED											
		<p>SCALE: NONE</p>	<p>SHEET 2 OF 2</p>								