



SYSTEM 300 SWING DOOR INSTALLATION INSTRUCTIONS

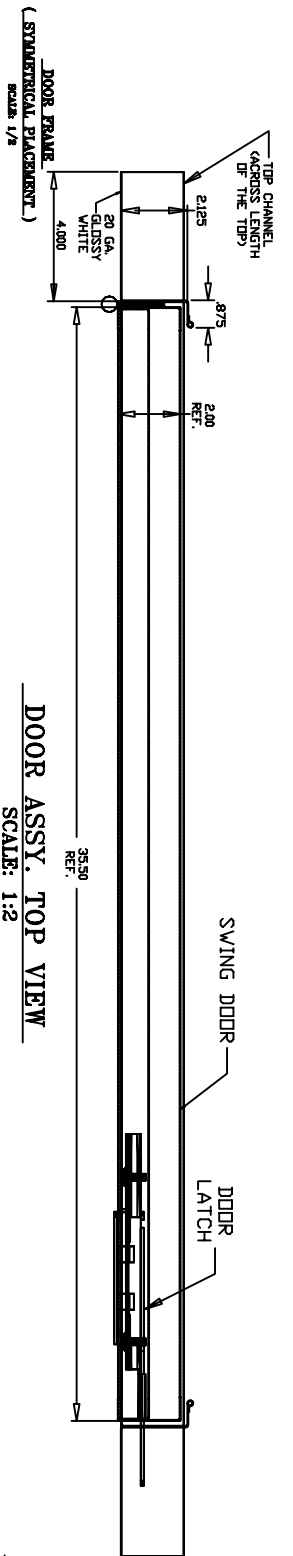
DRAWING No.	REVISION	REV. DATE	TYPE OF DRAWING
A-400-960-0003	-	12/17/03	SYSTEM 300 SWING DOOR LOGO SHEET
A-400-960-0003.00	-	12/17/03	SYSTEM 300 SWING DOOR DRAWING INDEX SHEET
A-400-960-0003.01	-	12/17/03	SYSTEM 300 SWING DOOR ASSEMBLY CONFIGURATION
A-400-960-0003.02	-	12/17/03	SYSTEM 300 SWING DOOR INSTALLATION INSTRUCTIONS
A-400-960-0003.03	-	12/17/03	SYSTEM 300 SWING DOOR INSTALLATION INSTRUCTIONS
A-400-960-0003.04	-	10/02/03	SYSTEM 300 SWING DOOR INSTALLATION INSTRUCTIONS
A-400-960-0007.01	-	12/17/03	SYSTEM 300 SWING DOOR INSTALLATION INSTRUCTIONS
A-400-960-0003.05	-	10/02/03	SYSTEM 300 SWING DOOR INSTALLATION INSTRUCTIONS
A-400-960-0003.06	-	12/17/03	SYSTEM 300 SWING DOOR INSTALLATION INSTRUCTIONS
A-400-960-0003.08	-	10/01/03	SYSTEM 300 SWING DOOR INSTALLATION INSTRUCTIONS
A-400-960-0003.07	-	10/01/03	SYSTEM 300 SWING DOOR INSTALLATION INSTRUCTIONS
A-400-960-0006.01	-	10/01/03	SYSTEM 300 LOCKER INSTALLATION INSTRUCTIONS
A-400-960-0006.02	-	08/28/03	SYSTEM 300 LOCKER INSTALLATION INSTRUCTIONS

APPROVALS		DATE:
DRAWN	AJS	10/02/03
CHECKED	Gene Nalley	12/17/03
APPROVED	Gene Nalley	12/17/03

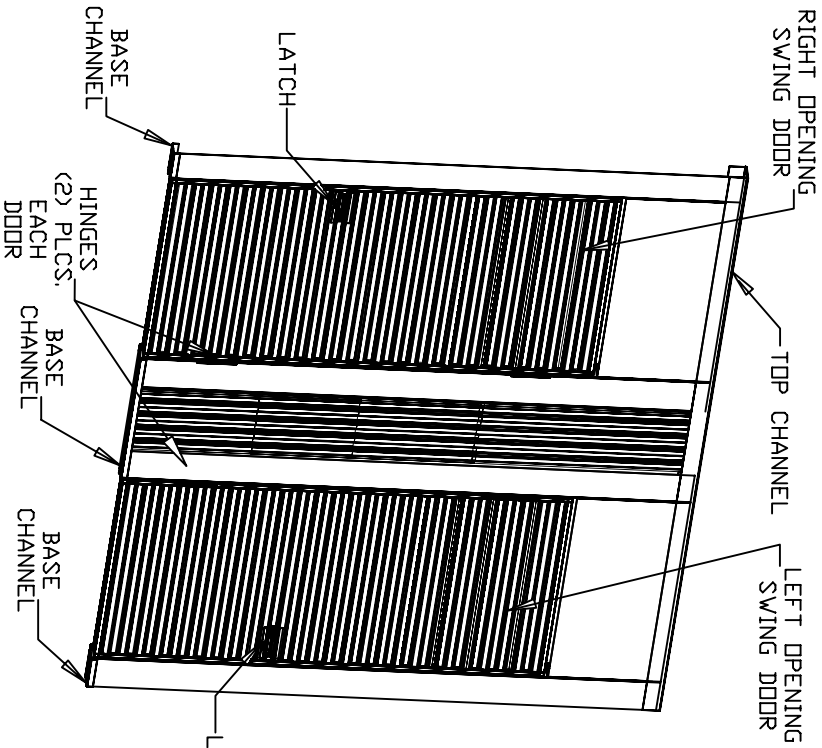
DBCI
DOORS & BUILDING COMPONENTS
DOUGLASVILLE, GA CHANDLER, AZ HOUSTON, TX
©2001 DBCI ALL RIGHTS RESERVED

SYSTEM 300 SWING DOOR
DRAWING INDEX SHEET

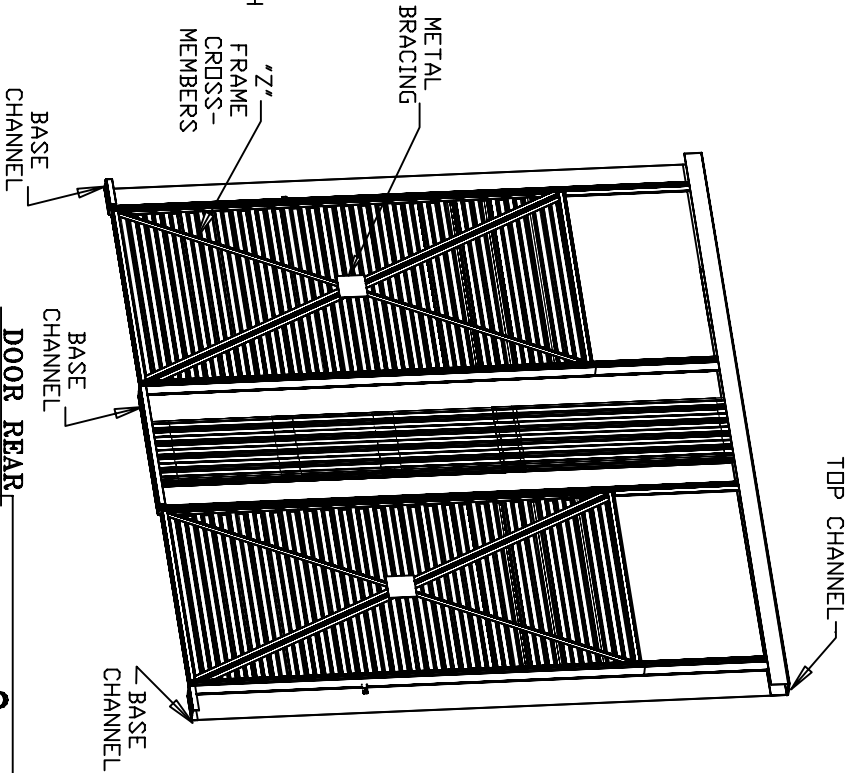
SIZE: DRAWING NUMBER: -400-960-0003.00 REV. -
SCALE: NONE SHEET 2 OF 13



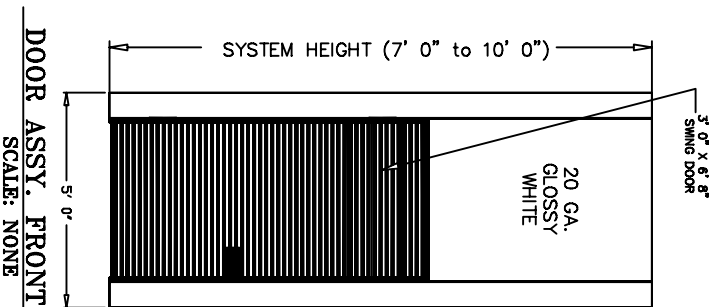
DOOR ASSY. TOP VIEW
SCALE: 1:2



DOOR FRONT
SCALE: NONE



DOOR REAR
SCALE: NONE



DOOR ASSY. FRONT VIEW
SCALE: NONE

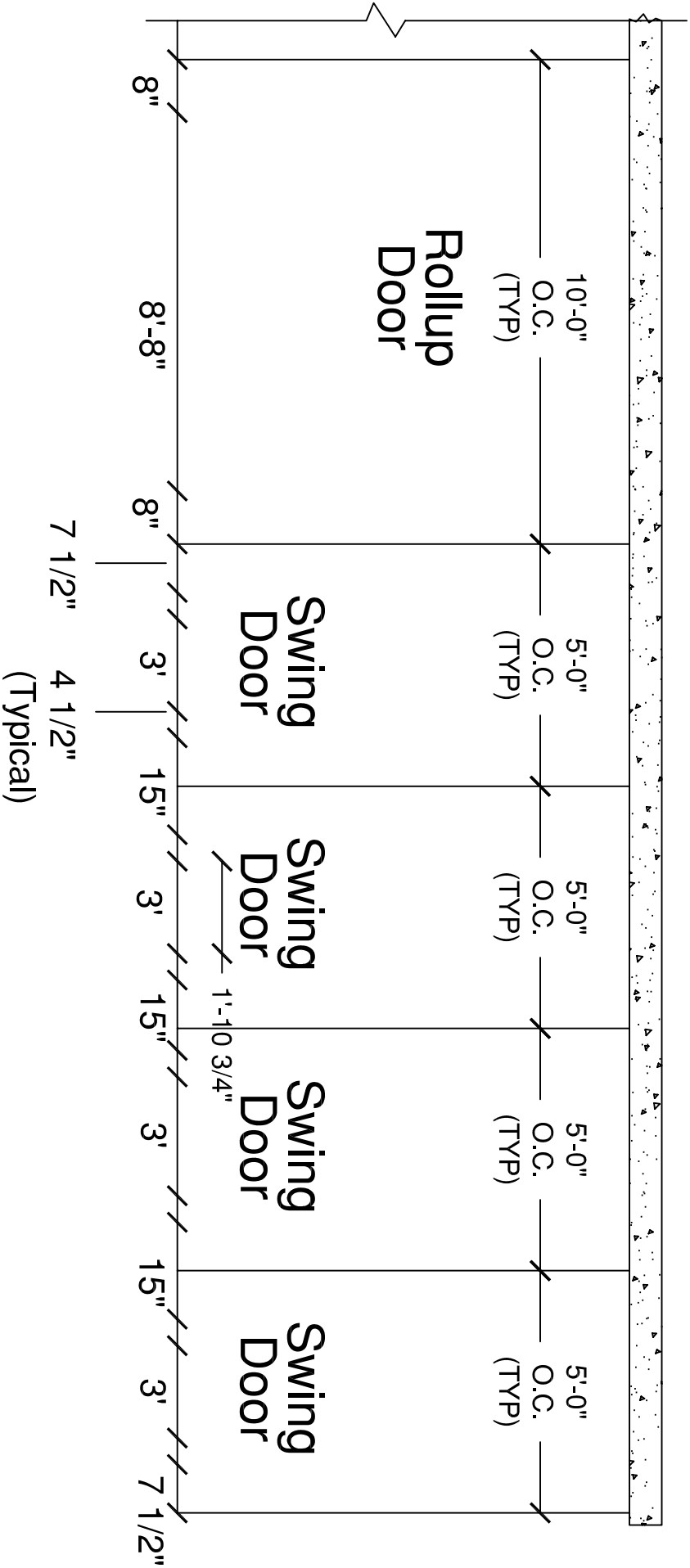
APPROVALS	DATE:
DRAWN AJS	10/01/03
CHECKED Lone Nalley	12/17/03
APPROVED Lone Nalley	12/17/03

DBCI
DOORS & BUILDING COMPONENTS
DOUGLASVILLE, GA CHANDLER, AZ HOUSTON, TX
©2001 DBCI ALL RIGHTS RESERVED

**SYSTEM 300 SWING DOOR
INSTALLATION INSTRUCTIONS**

SIZE: **A** DRAWING NUMBER: **-400-960-0003,01** REV: **-**

SCALE: NONE SHEET 3 OF 13



STEP #1

ESTABLISHING BOUNDARIES AND DIMENSIONS

Establish chalk-line layout on floor to corresponding architectural unit mix. Snap lines on floor and mark dimensions of door openings.

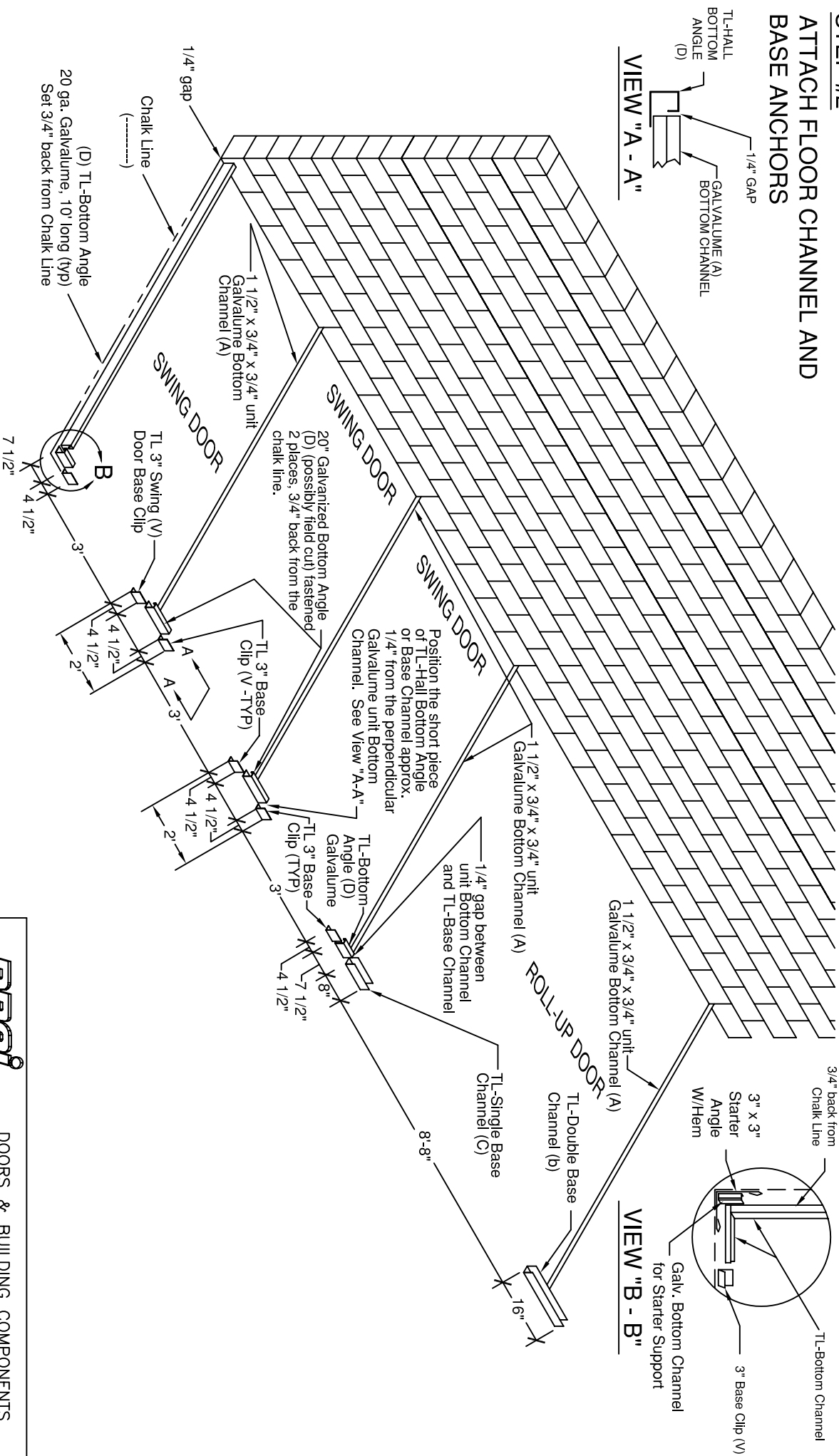
NOTE: Hash marks (//) show layout dimension with corresponding measurement between each mark.

APPROVALS		DATE:
DRAWN	AJS	10/01/02
CHECKED	Lane Nalley	12/17/03
APPROVED	Lane Nalley	12/17/03

	DOORS & BUILDING COMPONENTS DOUGLASVILLE, GA CHANDLER, AZ HOUSTON, TX ©2001 DBCI ALL RIGHTS RESERVED	
	SYSTEM 300 SWING DOOR INSTALLATION INSTRUCTIONS	
SIZE 	DRAWING NUMBER A-400-960-0003.02	REV. -
SCALE: 1:40	SHEET 4 OF 13	

STEP #2

ATTACH FLOOR CHANNEL AND BASE ANCHORS



NOTES:

- 1) All bottom channels to be fastened 4 places per 10'-0" using powder actuated fasteners w/ 3/4" long pin.
- 2) Fasten TL-Hall Bottom Angle (D) 3/4" to the inside of the boundary chalk line.
- 3) Fasten swing door base clips (V) on chalk line centered at 4 1/2" locations.
- 4) Fasten TL-Base Channel (B & C) on chalk line at 8" single and 16" double locations.
- 5) Leave (1/4") gap at all galv. unit bottom channel locations.
- 6) Field cut galv. Bottom Channel to 2" length and attach at corner on chalk line. (See View "B-B")

APPROVALS		DATE:	
DRAWN	AJS	10/01/03	
CHECKED	Done Nolley	12/17/03	
APPROVED	Done Nolley	12/17/03	

DOORS & BUILDING COMPONENTS
DOUGLASSVILLE, GA CHANDLER, AZ HOUSTON, TX
©2001 DBCI ALL RIGHTS RESERVED

SYSTEM 300 SWING DOOR INSTALLATION INSTRUCTIONS

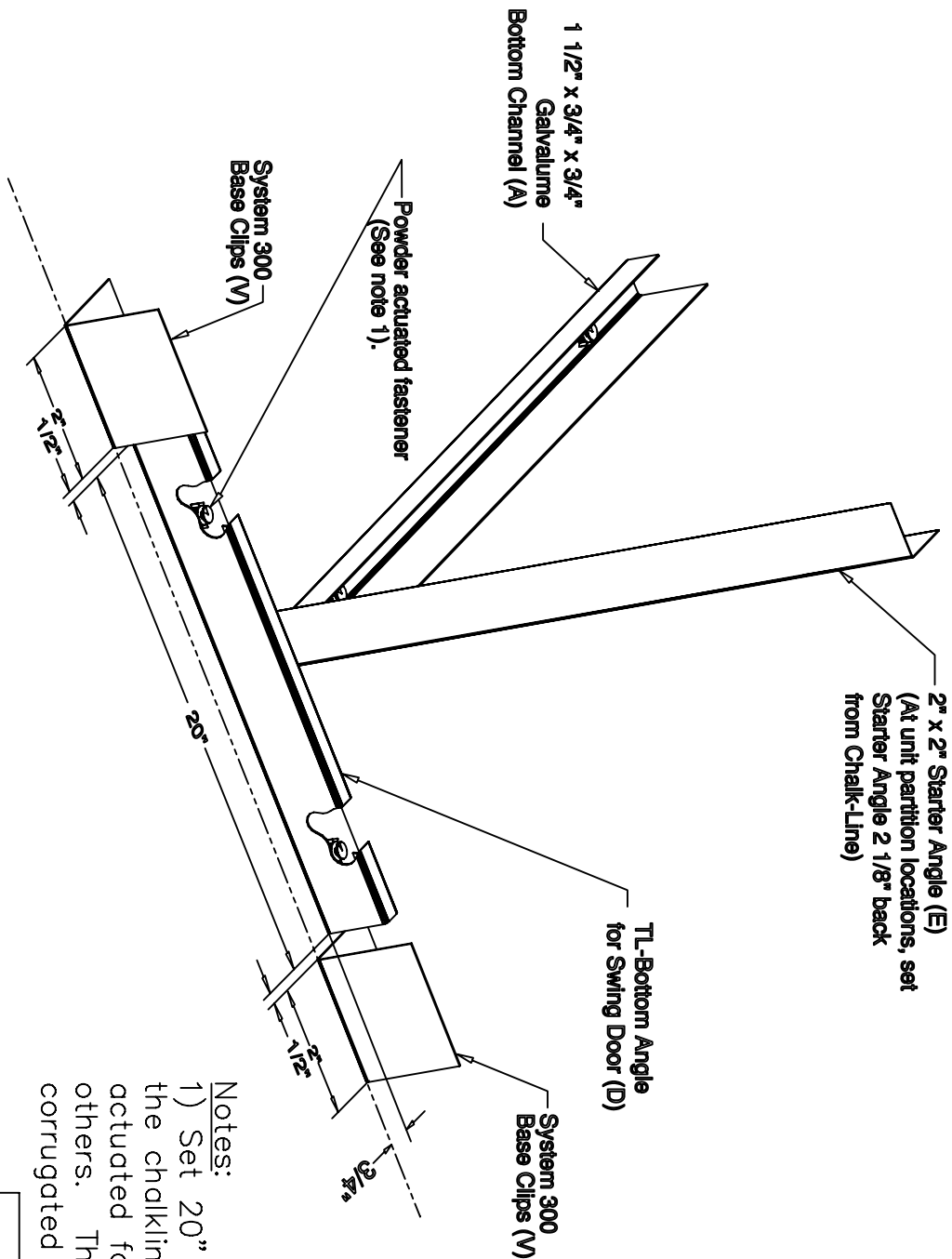
SIZE: DRAWING NUMBER: **400-960-0003.03**

SCALE: 1:50 SHEET 5 OF 13

TITLE WAS A-400-005-0058.47.dwg

CADD No. A-400-960-0003.03.DWG

SWING DOOR TO SWING DOOR APPLICATION



- Notes:
- 1) Set 20" TL-Bottom Angle(D) 3/4" back from the chalkline. Fasten to floor using two powder actuated fasteners with 3/4" pins provided by others. This is for the attachment of the corrugated hallway sheets.

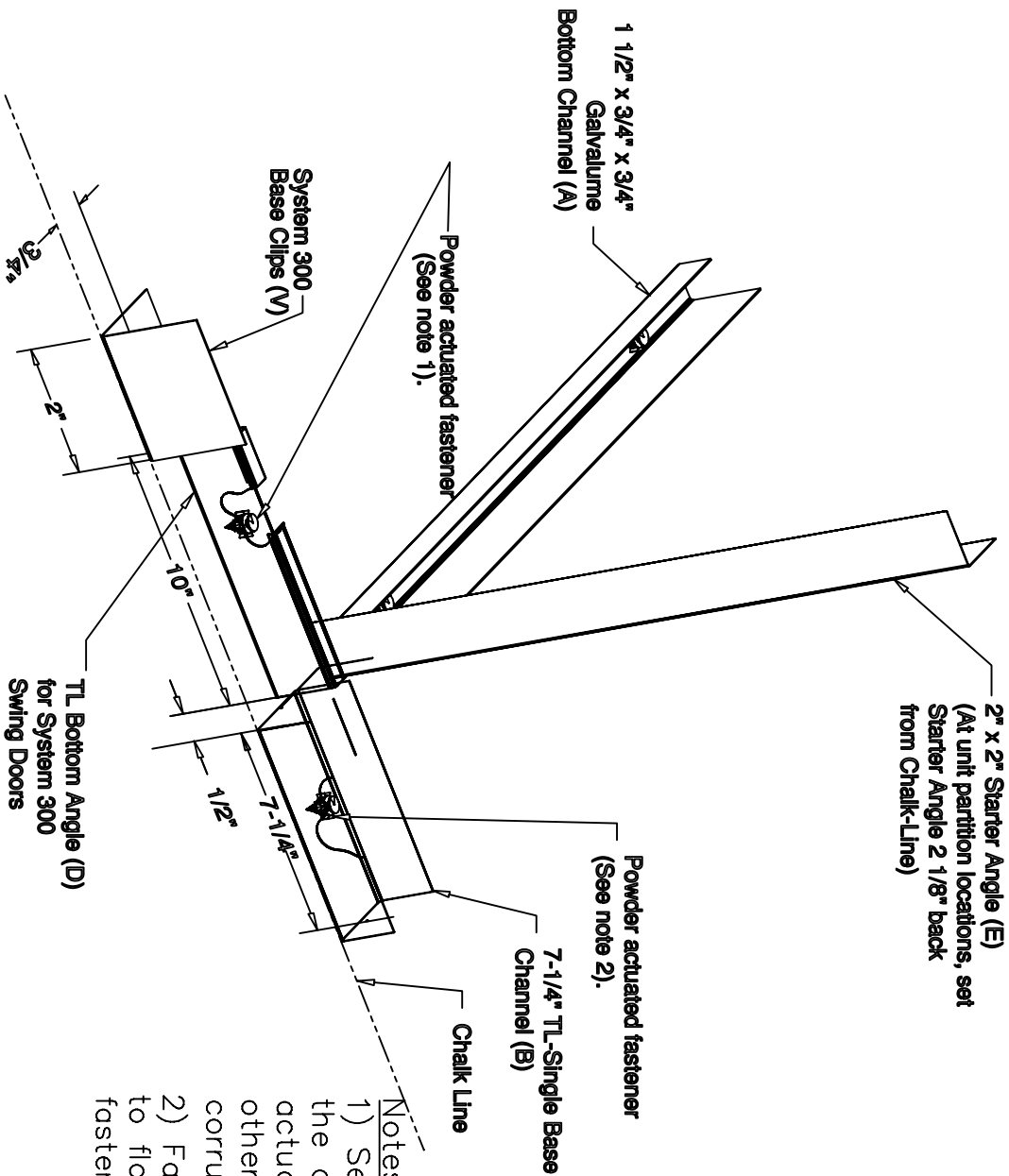
APPROVALS		DATE:
DRAWN	AJS	09/15/03
CHECKED	Gene Nalley	10/02/03
APPROVED	Bob Hammond	10/02/03

DBCI
DOORS & BUILDING COMPONENTS
DOUGLASVILLE, GA CHANDLER, AZ HOUSTON, TX
©2001 DBCI ALL RIGHTS RESERVED

SYSTEM 300 SWING DOOR
INSTALLATION INSTRUCTIONS

SIZE	DRAWING NUMBER	REV.
	400-960-0003.04	-
SCALE:	NONE	SHEET 6 OF 13

SWING DOOR TO ROLL-UP DOOR APPLICATION



Powder actuated fastener
(See note 2).


7-1/4" TL-Single Base
Channel (B)

Chalk Line

Notes:


- 1) Set 10" TL-Bottom Angle(D) 3/4" back from the chalkline. Fasten to floor using two powder actuated fasteners with 3/4" pins provided by others. This is for the attachment of the corrugated hallway sheets.
- 2) Fasten 7-1/4" TL-Single Base Channel (E) to floor on chalkline with two powder actuated fasteners with 3/4" pins provided by others.

APPROVALS		DATE:
DRAWN	AJS	082903
CHECKED	One Nalley	12/17/03
APPROVED	One Nalley	12/17/03



DOORS & BUILDING COMPONENTS
DOUGLASVILLE, GA CHANDLER, AZ HOUSTON, TX
©2001 DBCI ALL RIGHTS RESERVED

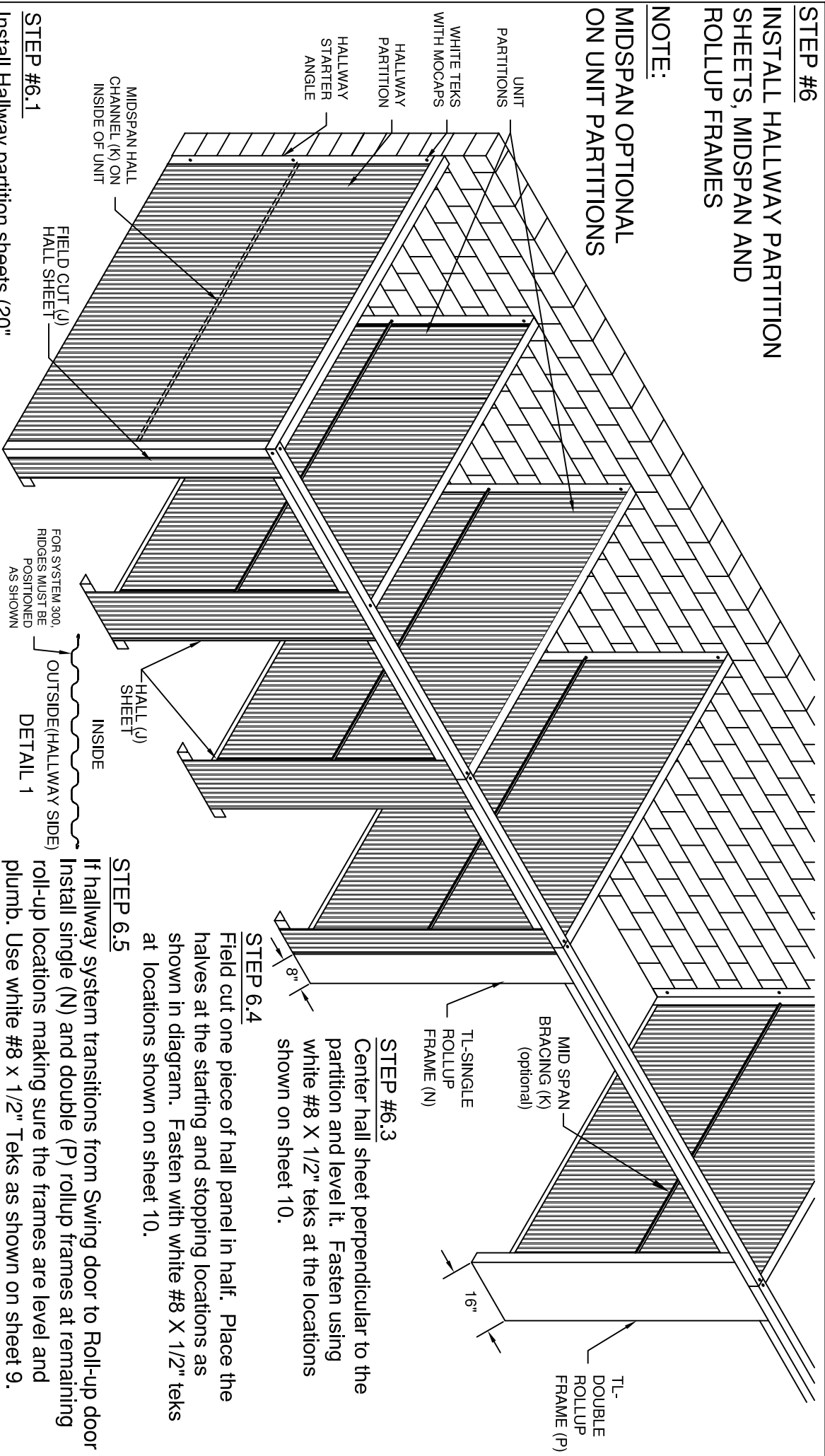
**SYSTEM 300 SWING DOOR
INSTALLATION INSTRUCTIONS**

SIZE	DRAWING NUMBER	REV.
	400-960-0007.01	-
SCALE:	NONE	SHEET 7 OF 13

STEP #6

INSTALL HALLWAY PARTITION SHEETS, MIDSPAN AND ROLLUP FRAMES

NOTE:
MIDSPAN OPTIONAL ON UNIT PARTITIONS



STEP #6.1

Install Hallway partition sheets (20" glossy white corrugated hallway partition). Fasten from outside with #8 x 1/2" white Tek screws. Use (3) #8 x 1/2" white Tek screws with moccaps at hallway starter angle. Install Unit partition sheets in the same manner using #8 x 1/2" galv. Tek screws.

STEP #6.2

Level the midspan bracing (K) on the inside of Hall partition. Fasten from outside with white Tek screws on every other rib in corrugation. Install unit partition midspan bracing in the same manner, using galvanized Tek screws. See section "B-B" on sheet 15 of the 300-Trim Install manual.

STEP 6.4

Field cut one piece of hall panel in half. Place the halves at the starting and stopping locations as shown in diagram. Fasten with white #8 X 1/2" teks at locations shown on sheet 10.

STEP 6.5

If hallway system transitions from Swing door to Roll-up door Install single (N) and double (P) rollup frames at remaining roll-up locations making sure the frames are level and plumb. Use white #8 x 1/2" Tek screws as shown on sheet 9.

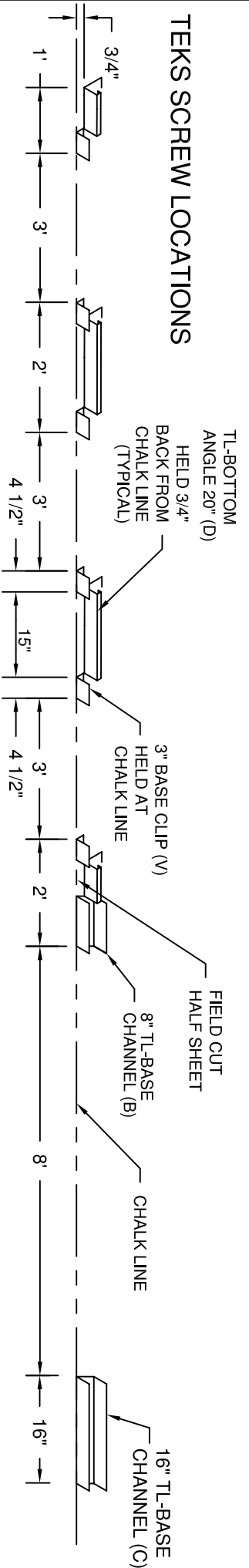
APPROVALS	DATE:
DRAWN AUS	09/17/03
CHECKED BOB Hammond	10/02/03
APPROVED BOB Hammond	10/02/03

DOORS & BUILDING COMPONENTS
DOUGLASSVILLE, GA CHANDLER, AZ HOUSTON, TX
©2001 DBCI ALL RIGHTS RESERVED

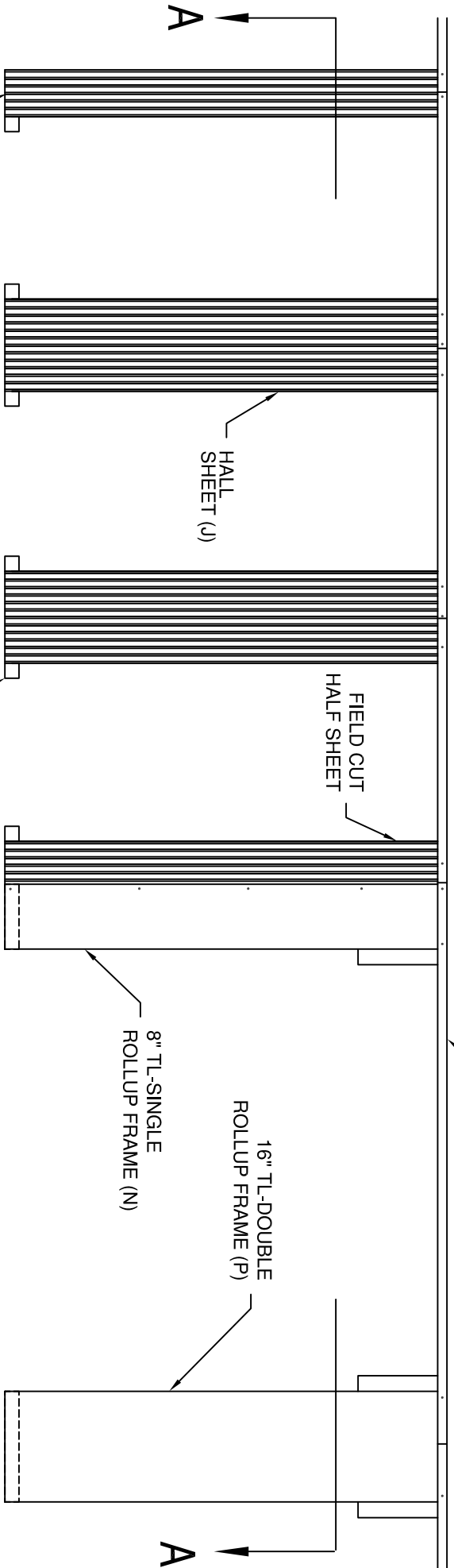
SYSTEM 300 SWING DOOR INSTALLATION INSTRUCTIONS

DRAWING NUMBER	REV.
-400-960-0003.05	-
SCALE: 1:50	SHEET 8 OF 13

TEKS SCREW LOCATIONS



SECTION "A-A"



ALL FASTENERS ARE #8 X 1/2" WHITE TEKS

HALL SHEET (J)

FIELD CUT HALF SHEET

3" CLIPS (V)

8" TL-SINGLE ROLLUP FRAME (N)

16" TL-DOUBLE ROLLUP FRAME (P)

TL-TOP CHANNEL @ 10'

TL-BOTTOM ANGLE 20° (D)
HELD 3/4" FROM BACK FROM CHALK LINE (TYPICAL)

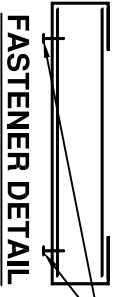
3" BASE CLIP (V)
HELD AT CHALK LINE

FIELD CUT HALF SHEET

8" TL-BASE CHANNEL (B)

CHALK LINE

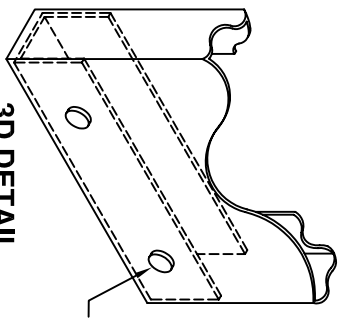
16" TL-BASE CHANNEL (C)



FASTENER DETAIL


FASTEN ROLLUP FRAME AT BASE ON FRONT USING TWO #8 TEKS SCREWS, EVENLY SPACED.

#8 X 1/2" WHITE TEKS



3D DETAIL

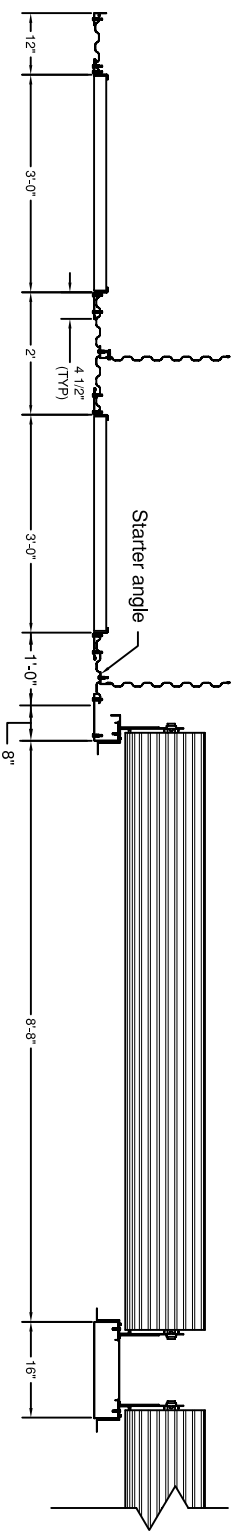
APPROVALS		DATE:
DRAWN	AUS	10/01/03
CHECKED	Gene Nalley	12/17/03
APPROVED	Gene Nalley	12/17/03



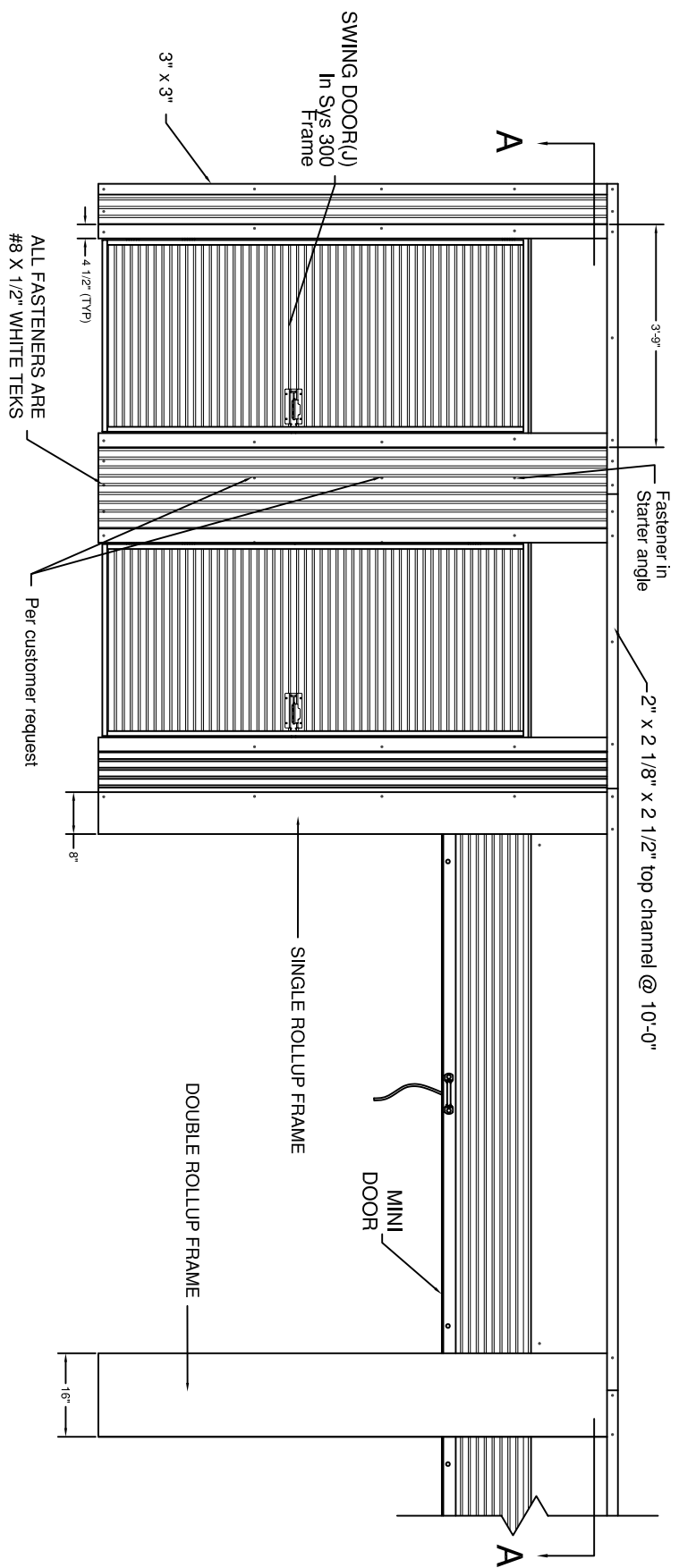
DOORS & BUILDING COMPONENTS
DOUGLASVILLE, GA CHANDLER, AZ HOUSTON, TX
©2001 DBCI ALL RIGHTS RESERVED

SYSTEM 300 SWING DOOR INSTALLATION INSTRUCTIONS

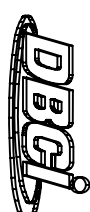
SIZE	DRAWING NUMBER	REV.
A	400-960-0003.06	-
SCALE:	SHEET	OF
1:30	9	13



SECTION "A-A"



FRONT VIEW



DOORS & BUILDING COMPONENTS
DOUGLASVILLE, GA CHANDLER, AZ HOUSTON, TX
©2001 DBCI ALL RIGHTS RESERVED

SYSTEM 300 HALLWAY
INSTALLATION INSTRUCTIONS

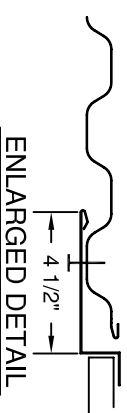
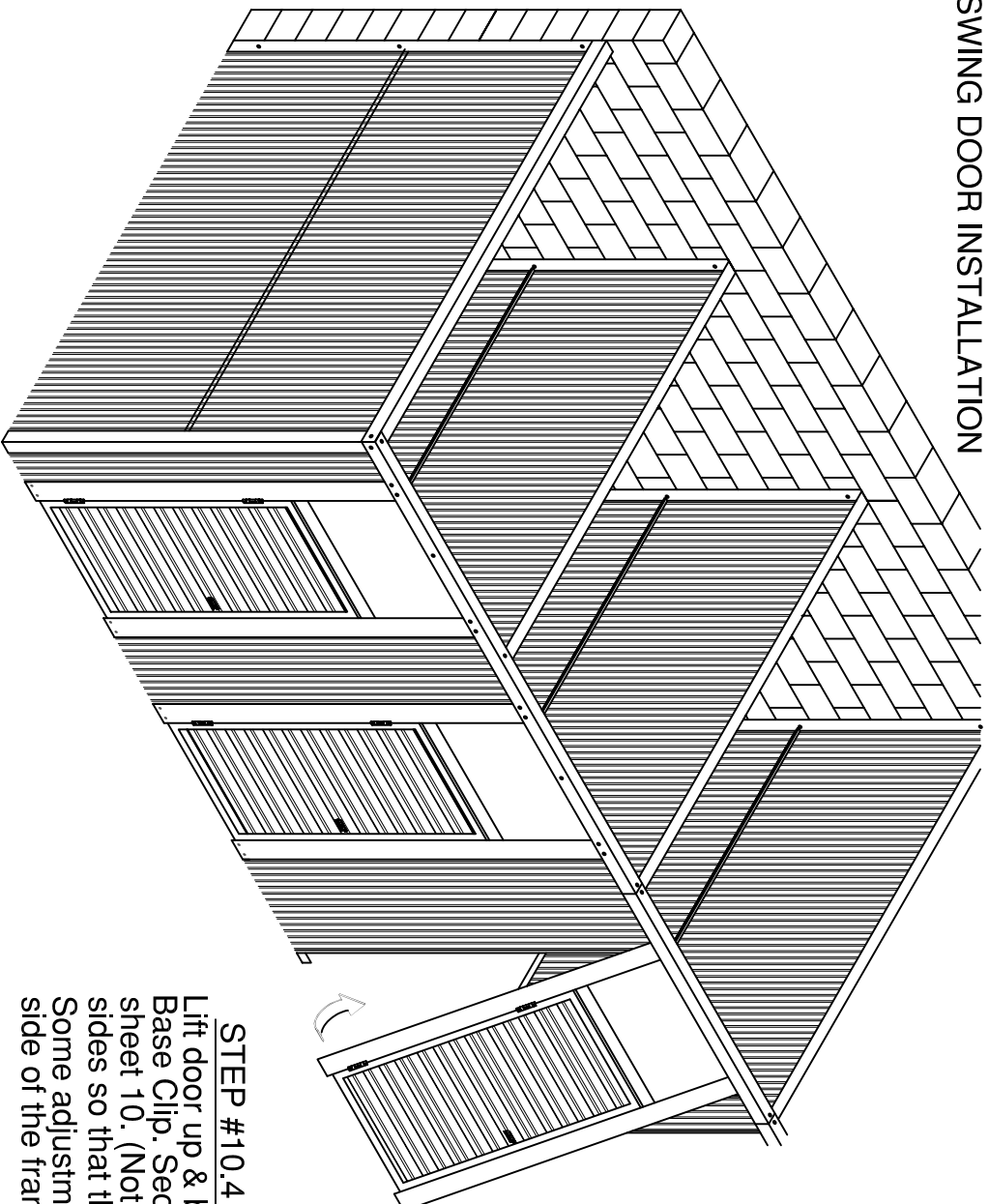
APPROVALS	DATE:
DRAWN AJS	10/01/03
CHECKED Bob Hammond	10/02/03
APPROVED Bob Hammond	10/02/03

SIZE	DRAWING NUMBER	SCALE:	SHEET	OF	REV.
	400-960-0003.08	1:25	10	13	-

TITLE WAS A-400-005-0058.61.dwg

CADD No. A-400-960-0003.08.DWG

STEP #10
SYSTEM 300
SWING DOOR INSTALLATION



STEP #10.1

Establish swing of door (right of left) and place up against designated unit.

STEP #10.2

Carefully remove shipping braces (top & bottom) and discard.


STEP #10.3

Slide the top of the door up under the Top Channel, but in front of the corrugated hall sheet. (Be sure the 1/2" hem on the frame is inset on the first corrugation of the Hallway sheet. (See enlarged detail above))

STEP #10.4

Lift door up & bring the lower portion of the door up to the Base Clip. Secure door at fastening points located on sheet 10. (Note: Be sure to square door and even gaps on all sides so that the frame is level with the corrugated sheet. Some adjustments may be required by slightly elevating one side of the frame. (This is typically due to variations in floor.)

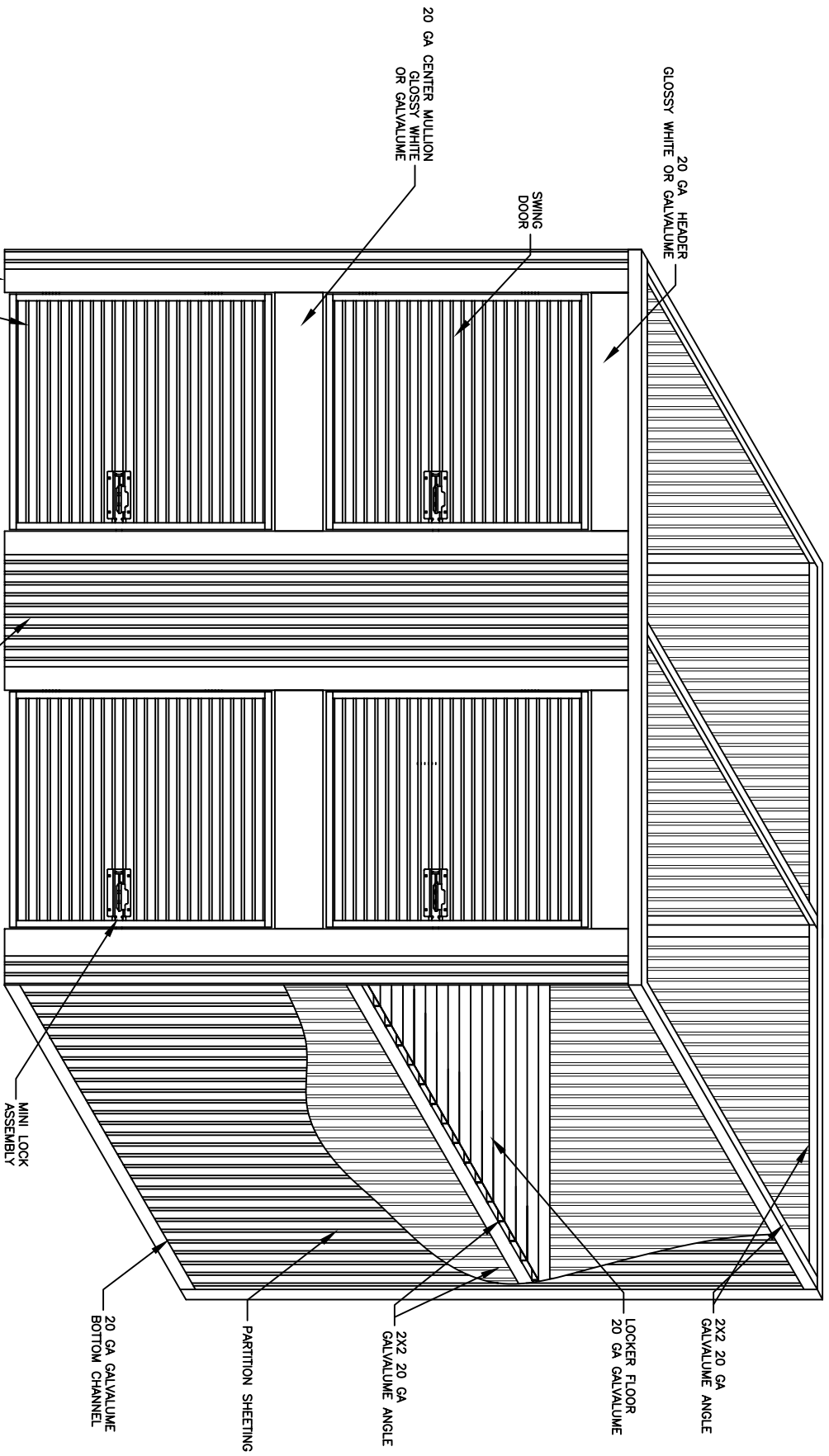
APPROVALS		DATE:
DRAWN	AJS	10/01/03
CHECKED	BOD Hammond	10/02/03
APPROVED	Bob Hammond	10/02/03



DOORS & BUILDING COMPONENTS
 DOUGLASSVILLE, GA CHANDLER, AZ HOUSTON, TX
 ©2001 DBCI ALL RIGHTS RESERVED

SYSTEM 300 SWING DOOR
INSTALLATION INSTRUCTIONS

SIZE	DRAWING NUMBER	REV.
SCALE: 1:50	—400—960—0003.07	—
	SHEET 11	OF 13



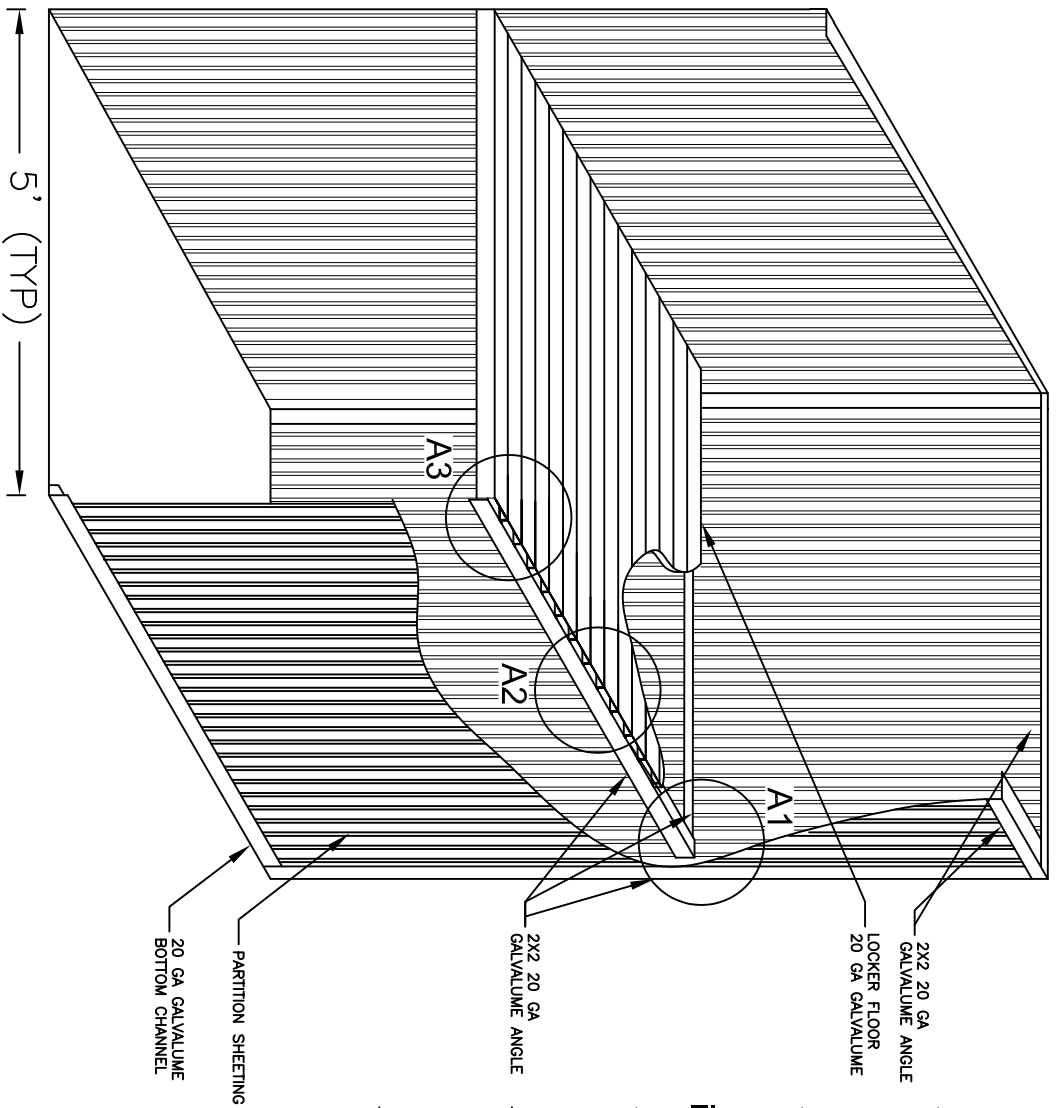
L.H. SWING SHOWN

APPROVALS		DATE:
DRAWN	AJS	10/01/03
CHECKED	BOB HAMMOND	100203
APPROVED	BOB HAMMOND	100203

DBCI
 DOORS & BUILDING COMPONENTS
 DOUGLASVILLE, GA CHANDLER, AZ HOUSTON, TX
 ©2001 DBCI ALL RIGHTS RESERVED

**SYSTEM 300 LOCKER
 INSTALLATION INSTRUCTIONS**

SIZE	DRAWING NUMBER	REV.
	-400-960-0006.01	-
SCALE:	NONE	
	SHEET 12 OF 13	



STEP #1.1

Install 2" x 2" Galvalume angle to the rear and sides of the locker unit

STEP #1.2

Beginning at the rear of the locker attach the locker floor as detailed in "A2"

STEP #1.3

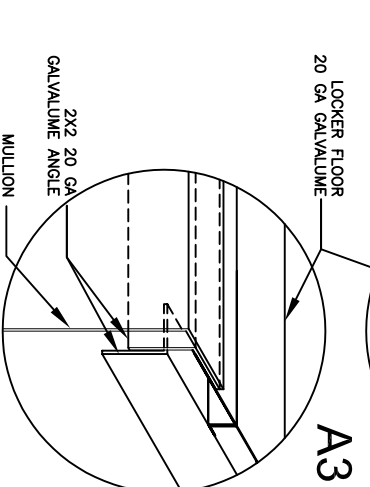
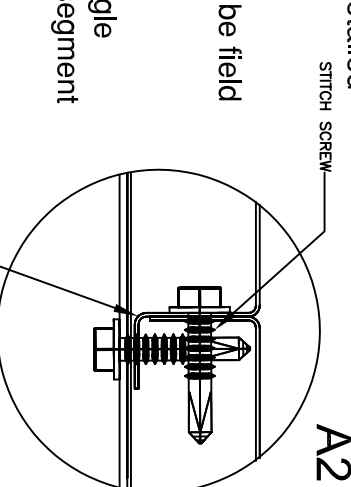
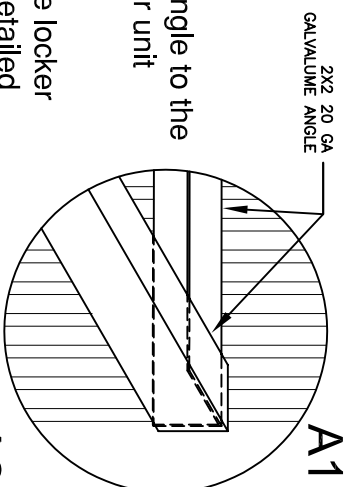
The last floor segment will be field cut to fit the unit depth

STEP #1.4


Install 2"x2" Galvalume angle to the top of the last floor segment

STEP #1.5

Install mullion to the top of the 2"x2" Galvalume angle




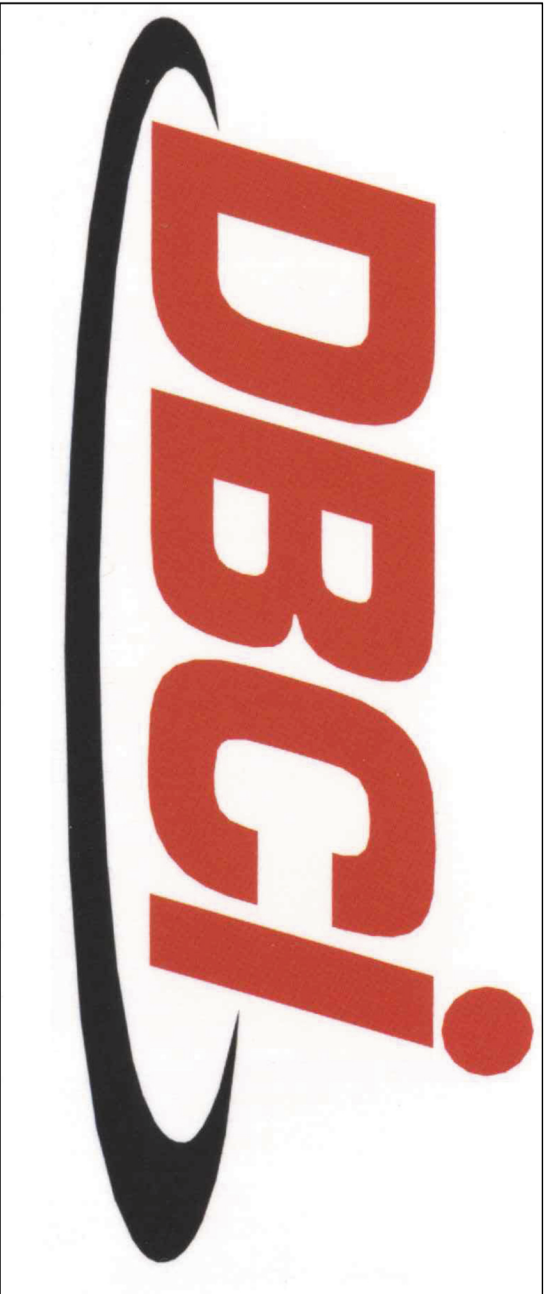
APPROVALS		DATE:
DRAWN	AJS	082803
CHECKED	BOB HAMMOND	100203
APPROVED	BOB HAMMOND	100203



DOORS & BUILDING COMPONENTS
 DOUGLASVILLE, GA CHANDLER, AZ HOUSTON, TX
 ©2001 DBCI ALL RIGHTS RESERVED

SYSTEM 300
LOCKER SYSTEM


SIZE	DRAWING NUMBER	REV.
	-400-960-0006.02	
SCALE:	SHEET	OF
	13	13



SYSTEM 500 SWING DOOR INSTALLATION INSTRUCTIONS


DRAWING NO.	REVISION	REV. DATE	TYPE OF DRAWING
A-400-961-0006.01	-	10/02/03	SYSTEM 500 SWING DOOR LOGD SHEET
A-400-961-0006.02	-	09/17/03	SYSTEM 500 SWING DOOR DRAWING INDEX SHEET
A-400-961-0006.03	-	04/09/03	SYSTEM 500 SWING DOOR ASSEMBLY CONFIGURATION
A-400-961-0006.04	-	04/04/03	SYSTEM 500 SWING DOOR INSTALLATION INSTRUCTIONS
A-400-961-0006.05	-	04/07/03	SYSTEM 500 SWING DOOR INSTALLATION INSTRUCTIONS
A-400-961-0006.06	-	04/02/03	SYSTEM 500 SWING DOOR INSTALLATION INSTRUCTIONS
A-400-961-0006.07	-	04/02/03	SYSTEM 500 SWING DOOR INSTALLATION INSTRUCTIONS
A-400-961-0006.08	-	09/16/03	SYSTEM 500 SWING DOOR INSTALLATION INSTRUCTIONS
A-400-961-0006.09	-	04/07/03	SYSTEM 500 SWING DOOR INSTALLATION INSTRUCTIONS
A-400-961-0006.10	-	04/14/03	SYSTEM 500 SWING DOOR INSTALLATION INSTRUCTIONS
A-400-961-0006.11	-	04/07/03	SYSTEM 500 SWING DOOR INSTALLATION INSTRUCTIONS
A-400-961-0006.12	-	06/11/03	SYSTEM 500 LOCKER INSTALLATION INSTRUCTIONS
A-400-961-0006.13	-	08/28/03	SYSTEM 500 LOCKER INSTALLATION INSTRUCTIONS

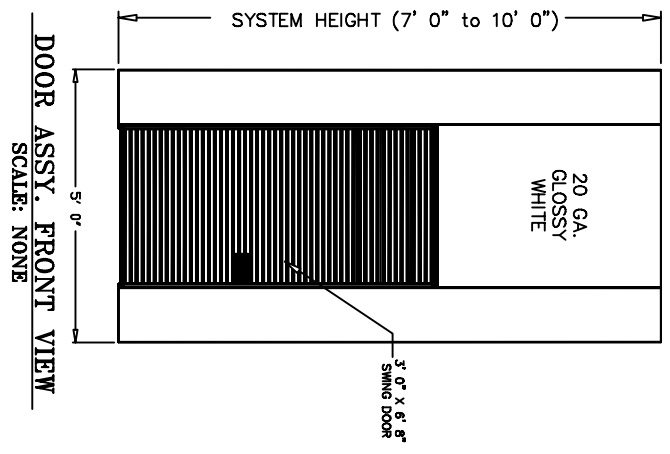
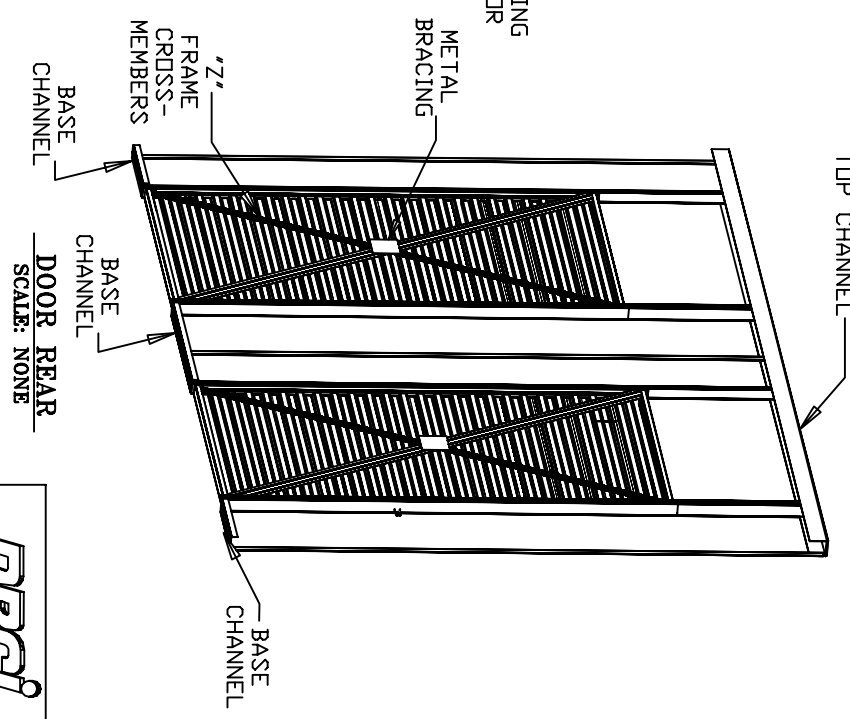
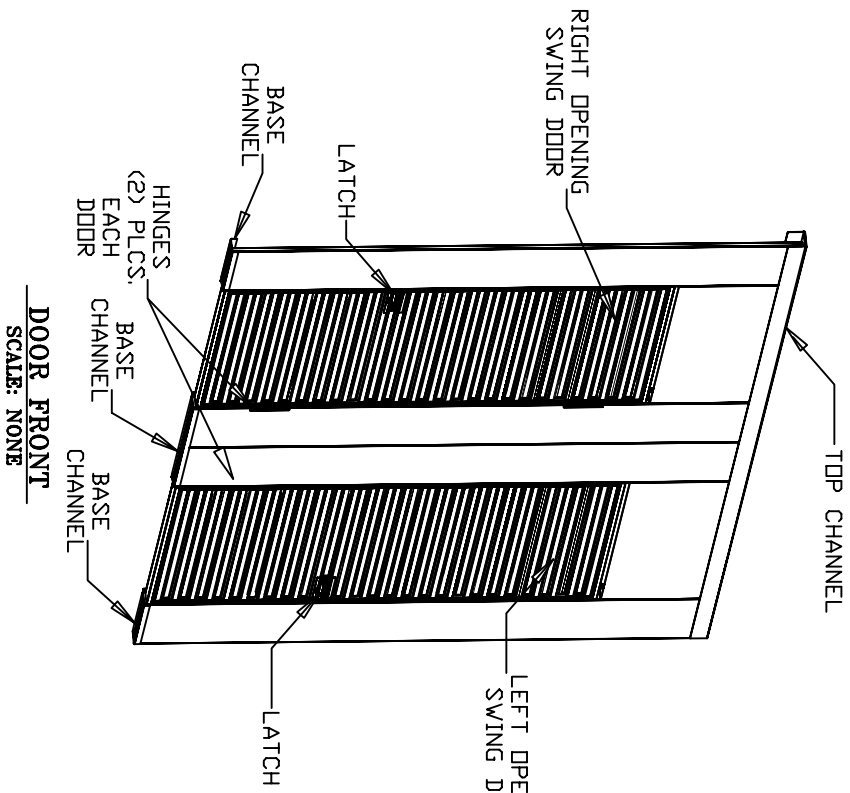
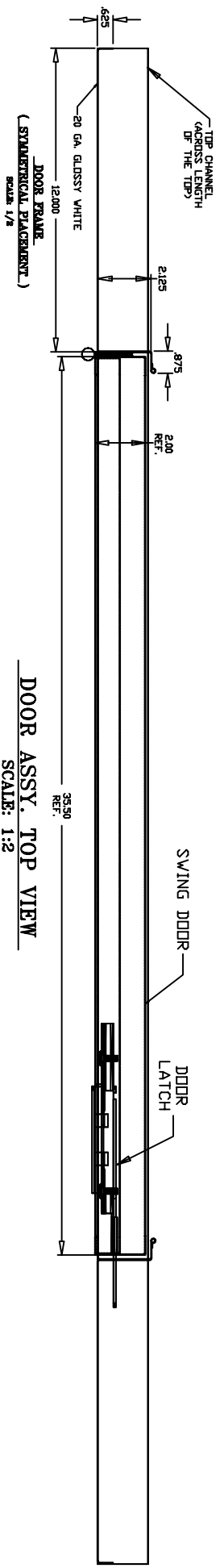
APPROVALS		DATE:
DRAWN	AJS	091703
CHECKED	Bob Hammond	0
APPROVED	Bob Hammond	0



DOORS & BUILDING COMPONENTS
DOUGLASVILLE, GA CHANDLER, AZ HOUSTON, TX
©2001 DBCI ALL RIGHTS RESERVED

SYSTEM 500 SWING DOOR
INSTALLATION INSTRUCTIONS

SIZE	DRAWING NUMBER	REV.
	-400-961-0006.02	-
SCALE:	SHEET	OF
NONE	2	13

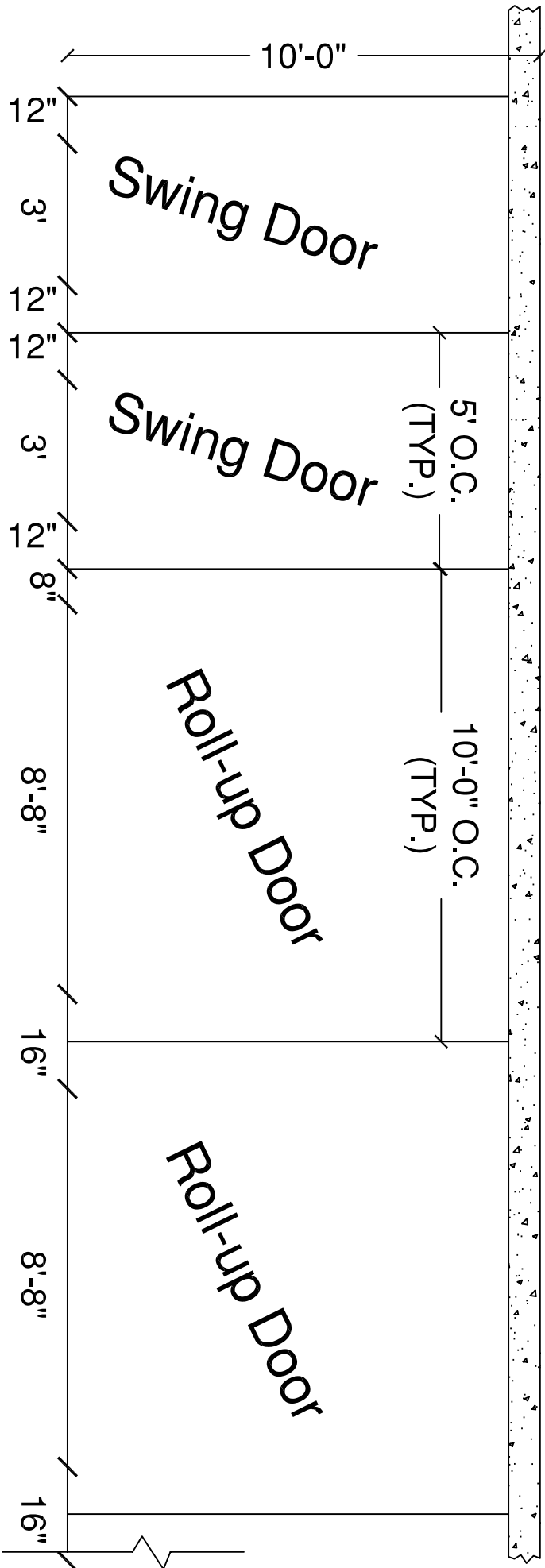


APPROVALS	DATE
DRAWN J. DAVIS	4/9/03
CHECKED Bob Hammond	10/02/03
APPROVED Bob Hammond	10/02/03

DBCI
 DOORS & BUILDING COMPONENTS
 DOUGLASVILLE, GA CHANDLER, AZ HOUSTON, TX
 ©2001 DBCI ALL RIGHTS RESERVED

SYSTEM 500 SWING DOOR
 INSTALLATION INSTRUCTIONS

SIZE: DRAWING NUMBER: -400-961-0006.03
 SCALE: NONE SHEET 3 OF 13




STEP #1

ESTABLISHING BOUNDARIES AND DIMENSIONS

Establish chalk-line layout on floor to corresponding architectural unit mix. Snap lines on floor and mark dimensions of door openings.

NOTE: Hash marks (//) show layout dimension with corresponding measurement between each mark.

APPROVALS		DATE:
DRAWN	J. DAVIS	4/4/03
CHECKED	BOB HAMMOND	10/02/03
APPROVED	BOB HAMMOND	10/02/03

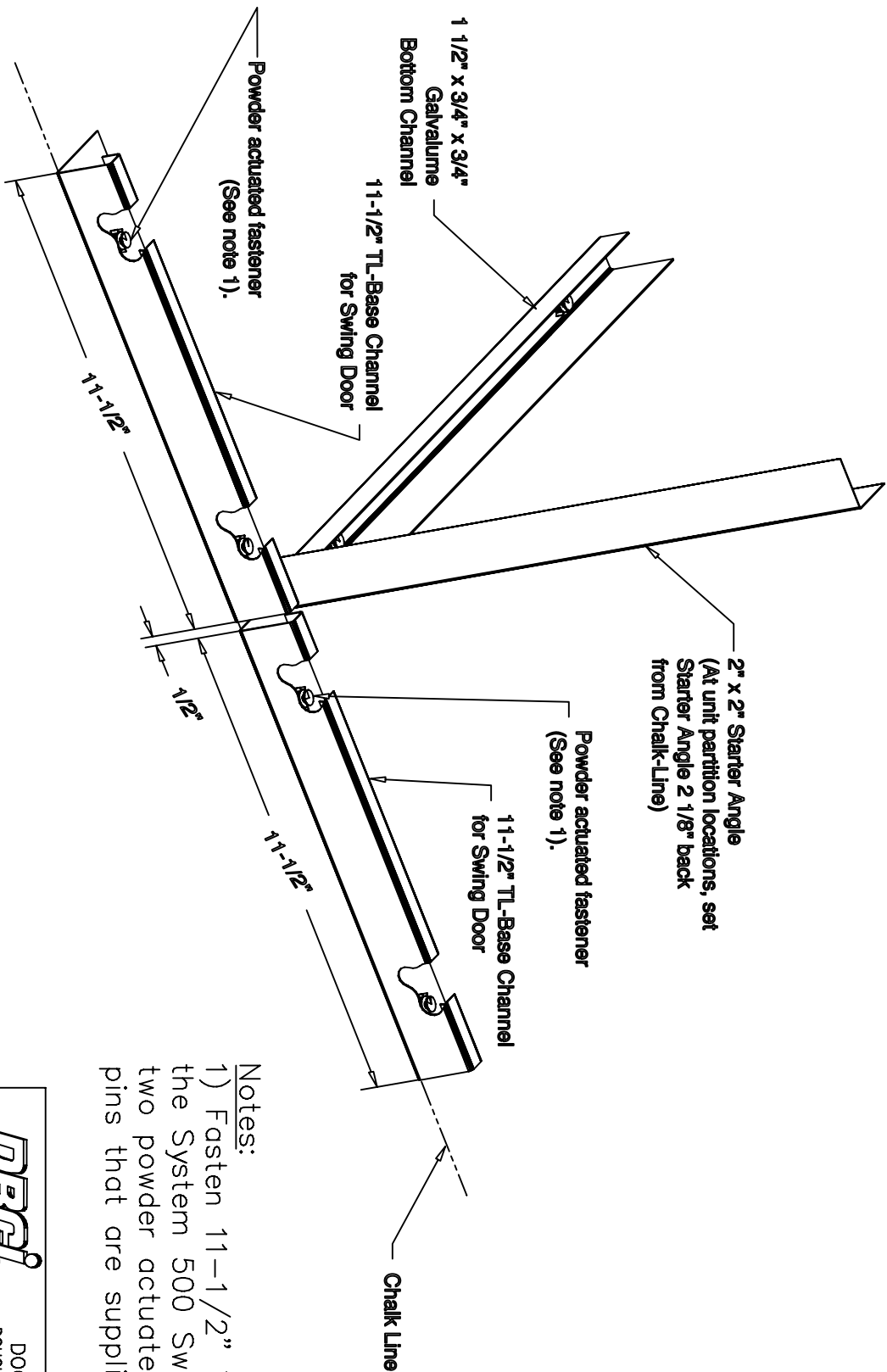


DOORS & BUILDING COMPONENTS
DOUGLASVILLE, GA CHANDLER, AZ HOUSTON, TX
©2001 DBCI ALL RIGHTS RESERVED

**SYSTEM 500 SWING DOOR
INSTALLATION INSTRUCTIONS**

SIZE	DRAWING NUMBER
SCALE: 1:40	—400—961—0006.04
SHEET 4	OF 13
REV.	—

SWING DOOR TO SWING DOOR APPLICATION



Notes:
 1) Fasten 11-1/2" TL-Base Channel for the System 500 Swing Door to floor with two powder actuated fasteners with 3/4" pins that are supplied by others.

APPROVALS	DATE:
DRAWN J. DAVIS	4/2/03
CHECKED BOB HAMMOND	10/02/03
APPROVED BOB HAMMOND	10/02/03

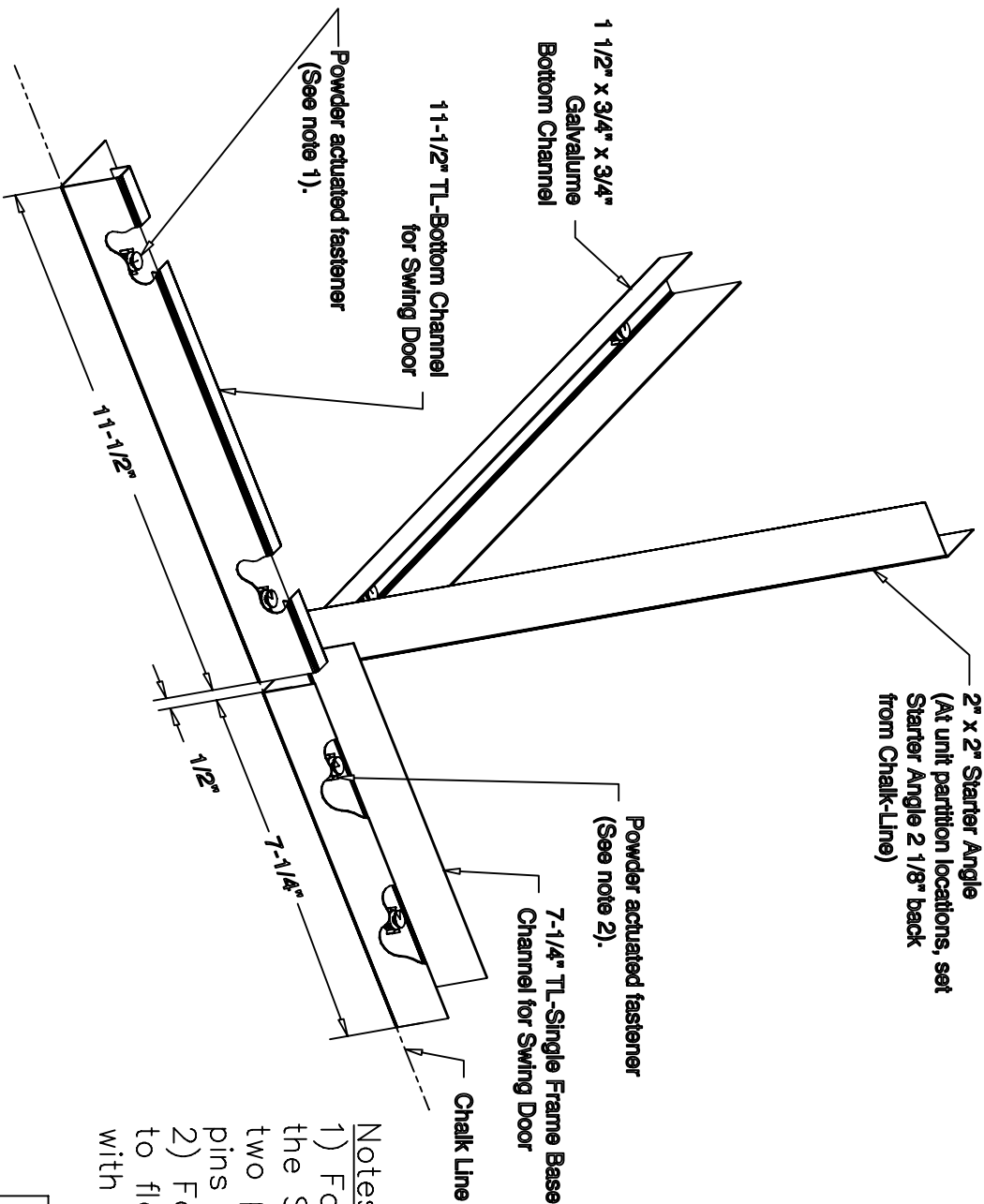
DOORS & BUILDING COMPONENTS
 DOUGLASVILLE, GA CHANDLER, AZ HOUSTON, TX
 ©2001 DBCI ALL RIGHTS RESERVED

SYSTEM 500 SWING DOOR INSTALLATION INSTRUCTIONS

SIZE	DRAWING NUMBER	REV.
A	400-961-0006.06	-


SCALE: NONE	SHEET 6 OF 13
-------------	---------------

SWING DOOR TO ROLL-UP DOOR TRANSITION



- Notes:**
- 1) Fasten 11-1/2" TL-Base Channel for the System 500 Swing Door to floor with two powder actuated fasteners with 3/4" pins provided by others.
 - 2) Fasten 7-1/4" TL-Single Base Channel to floor with two powder actuated fasteners with 3/4" pins provided by others.

APPROVALS		DATE:
DRAWN	J. DAVIS	4/2/03
CHECKED	Bob Hammond	10/02/03
APPROVED	Bob Hammond	10/02/03



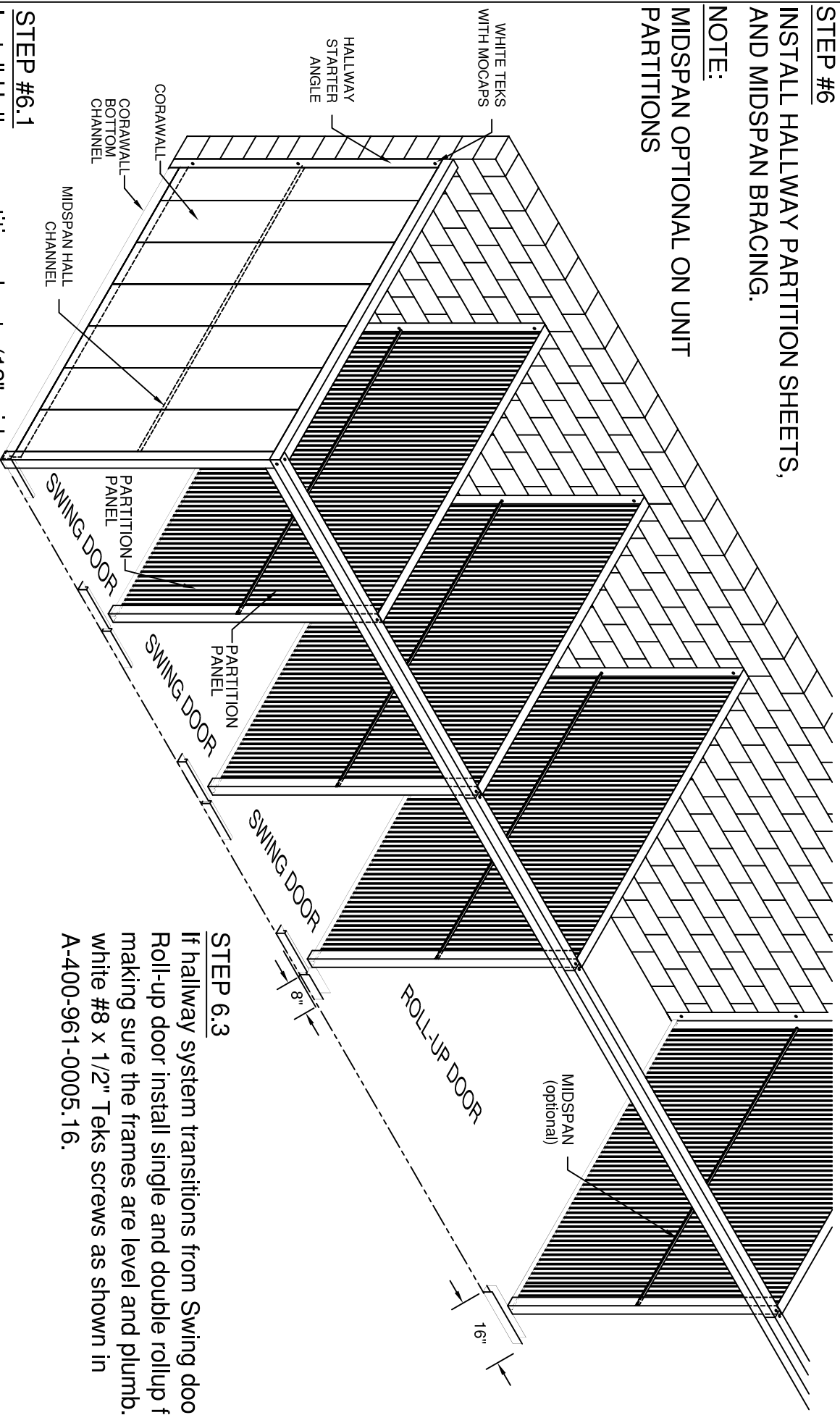
DOORS & BUILDING COMPONENTS
DOUGLASVILLE, GA CHANDLER, AZ HOUSTON, TX
©2001 DBCI ALL RIGHTS RESERVED

SYSTEM 500 SWING DOOR
INSTALLATION INSTRUCTIONS

SIZE	DRAWING NUMBER	REV.
A	400-961-0006.07	-
SCALE:	NONE	
SHEET	7	OF 13

STEP #6
INSTALL HALLWAY PARTITION SHEETS,
AND MIDSPAN BRACING.

NOTE:
MIDSPAN OPTIONAL ON UNIT
PARTITIONS



STEP #6.1
 Install Hallway partition sheets (12" wide glossy white flush hallway panels). Fasten from inside with #8 x 1/2" white Tekes screws. Use (3) #8 x 1/2" white Tekes screws with mocaps at hallway starter angle.

STEP #6.2
 Install midspan bracing (see A-400-961-0005.13) from unit side, using Tekes screws on inside leg of Corawall. Install unit partition midspan bracing in the same manner, using galvanized Tekes screws.

See section "B-B" on sheet 14 of the System 500 Hallway Instructions.

STEP 6.3
 If hallway system transitions from Swing door to Roll-up door install single and double rollup frames making sure the frames are level and plumb. Use white #8 x 1/2" Tekes screws as shown in A-400-961-0005.16.

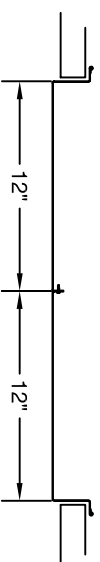
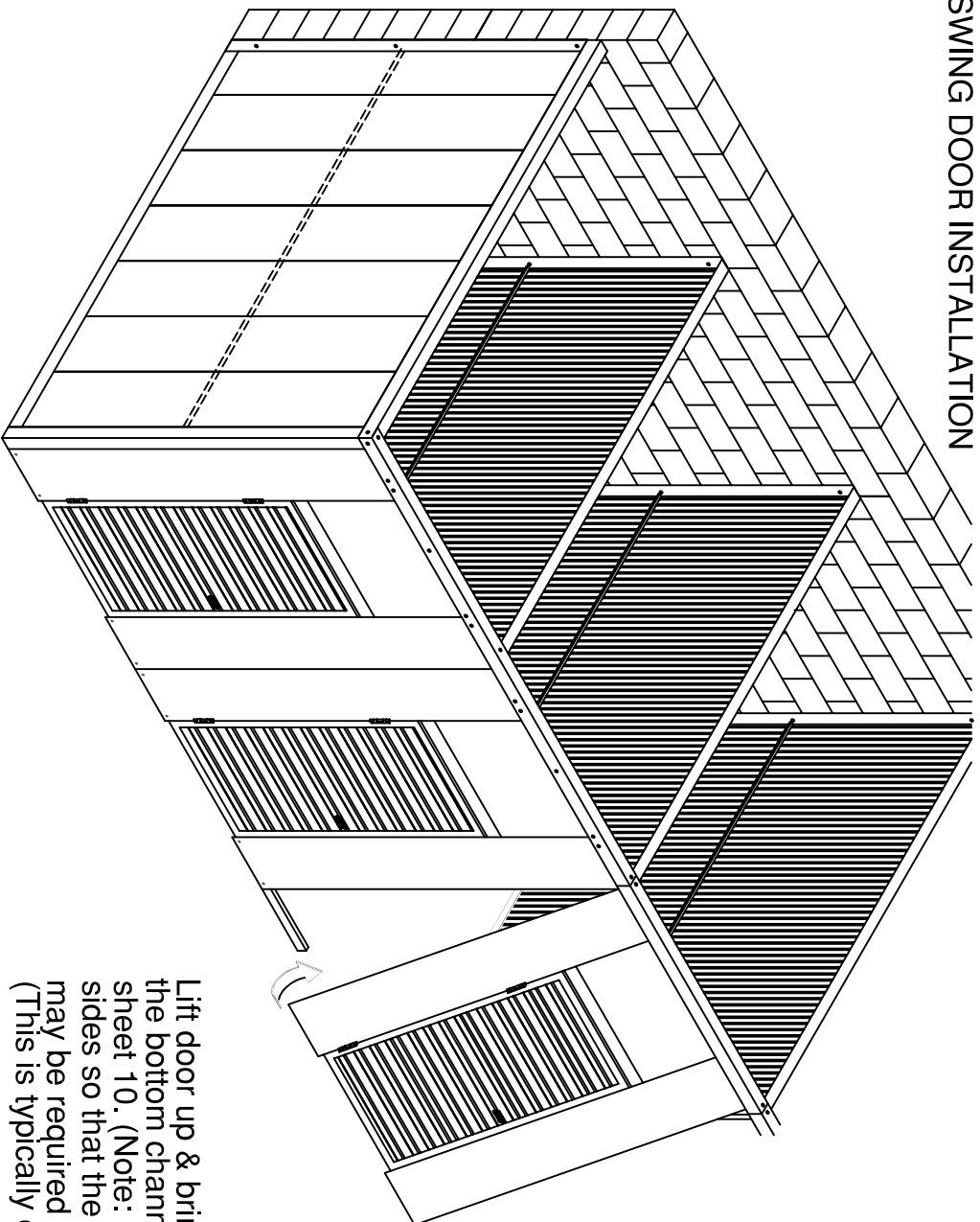
DRAWN	APPROVALS	DATE
AUS		09/16/03
CHECKED BOB Hammond		10/02/03
APPROVED BOB Hammond		10/02/03

DOORS & BUILDING COMPONENTS
 DOUGLASVILLE, GA CHANDLER, AZ HOUSTON, TX
 ©2001 DBCI ALL RIGHTS RESERVED

SYSTEM 500 SWING DOOR
INSTALLATION INSTRUCTIONS

SIZE	DRAWING NUMBER	REV.
A	400-961-0006.08	-
SCALE:	1:50	
SHEET	8	OF 13

STEP #10
SYSTEM 500
SWING DOOR INSTALLATION



TOP VIEW

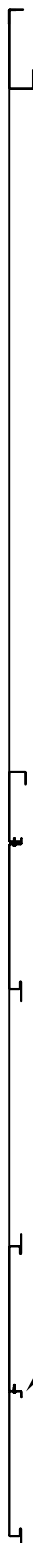
STEP #10.1
 Establish swing of door (right or left) and place up against designated unit.

STEP #10.2
 Carefully remove shipping braces (top & bottom) and discard.

STEP #10.3
 Slide the top of the door up under the Top Channel.

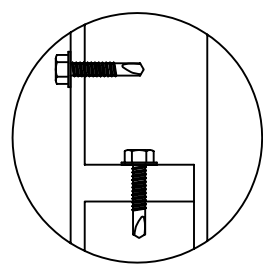
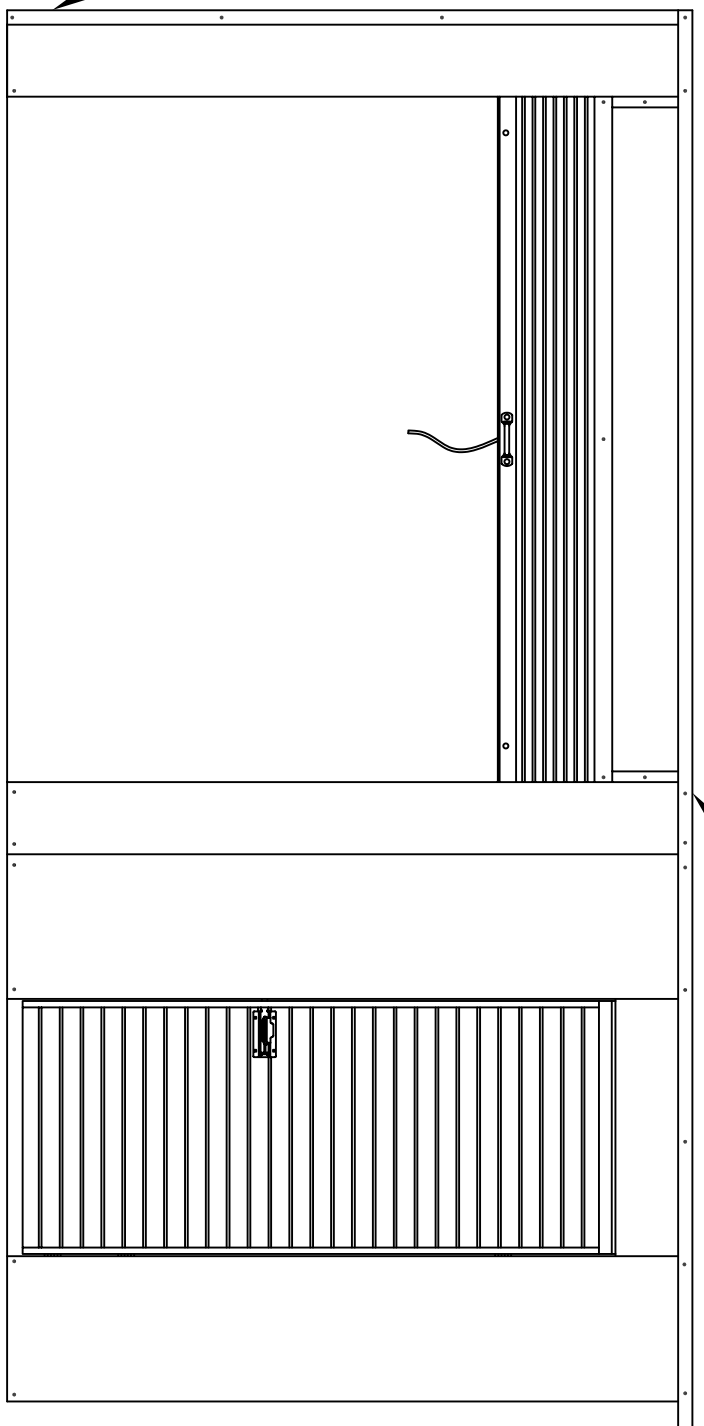
STEP #10.4
 Lift door up & bring the lower portion of the door frame up to the bottom channel. Secure door at fastening points located on sheet 10. (Note: Be sure to square door and even gaps on all sides so that the frame is level and plumb. Some adjustments may be required by slightly elevating one side of the frame. (This is typically due to variations in floor.)

		DOORS & BUILDING COMPONENTS DOUGLASSVILLE, GA CHANDLER, AZ HOUSTON, TX ©2001 DBCI ALL RIGHTS RESERVED	
SYSTEM 500 SWING DOOR INSTALLATION INSTRUCTIONS			
APPROVALS DRAWN J. DAVIS CHECKED Bob Hammond APPROVED Bob Hammond	DATE: 4/7/03 10/02/03 10/02/03	SIZE  DRAWING NUMBER 400-961-0006.09	REV. SHEET 9 OF 13



PANEL SECURED
AT 4 POINTS

TOP VIEW



FRONT VIEW

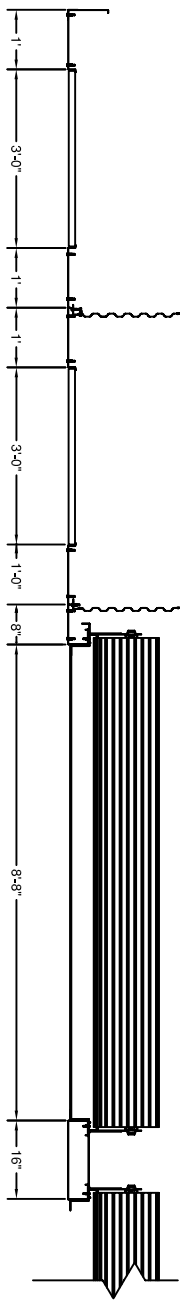
APPROVALS		DATE:
DRAWN	J. DAVIS	4/14/03
CHECKED	Bob Hammond	10/02/03
APPROVED	Bob Hammond	10/02/03

DOORS & BUILDING COMPONENTS
DOUGLASVILLE, GA CHANDLER, AZ HOUSTON, TX
©2001 DBCI ALL RIGHTS RESERVED

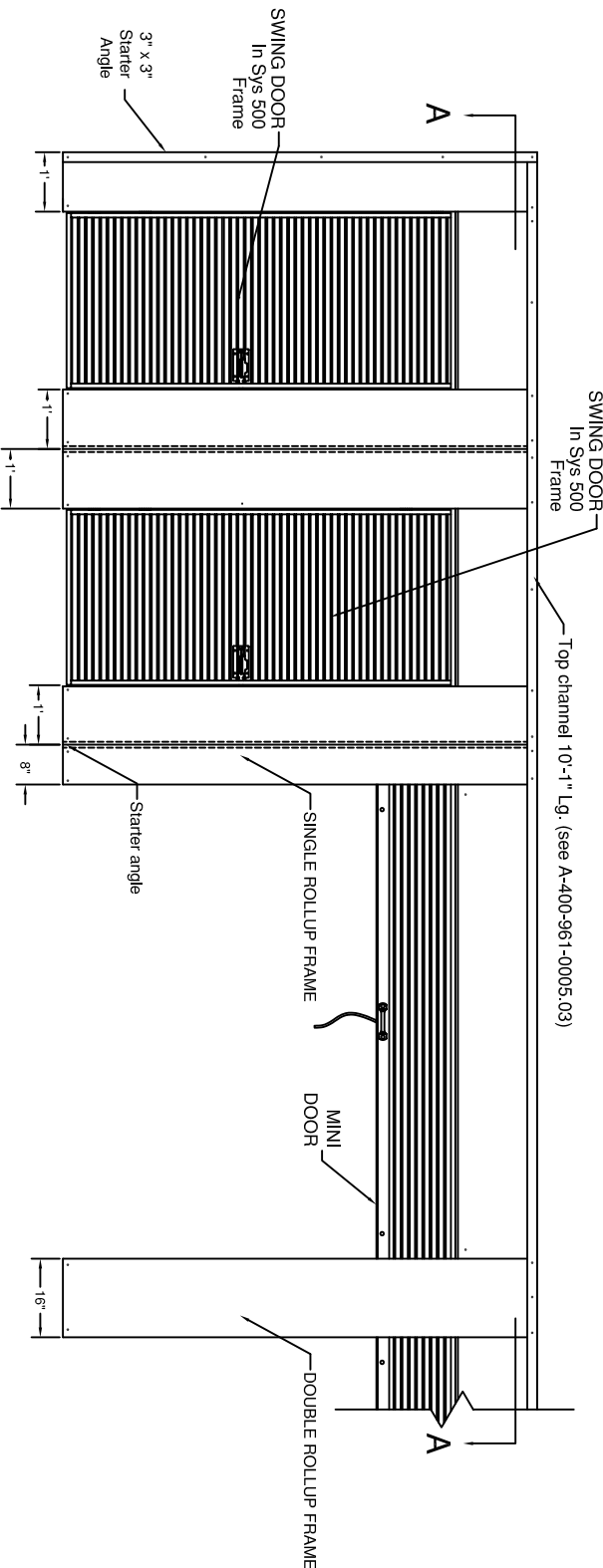
SYSTEM 500 SWING DOOR
INSTALLATION INSTRUCTIONS

DRAWING NUMBER	REV.
-400-961-0006.10	-


SCALE: NONE SHEET 10 OF 13



SECTION A-A



APPROVALS		DATE:
DRAWN	J. DAVIS	4/7/03
CHECKED	Lone Nalley	10/02/03
APPROVED	Bob Hammond	10/02/03

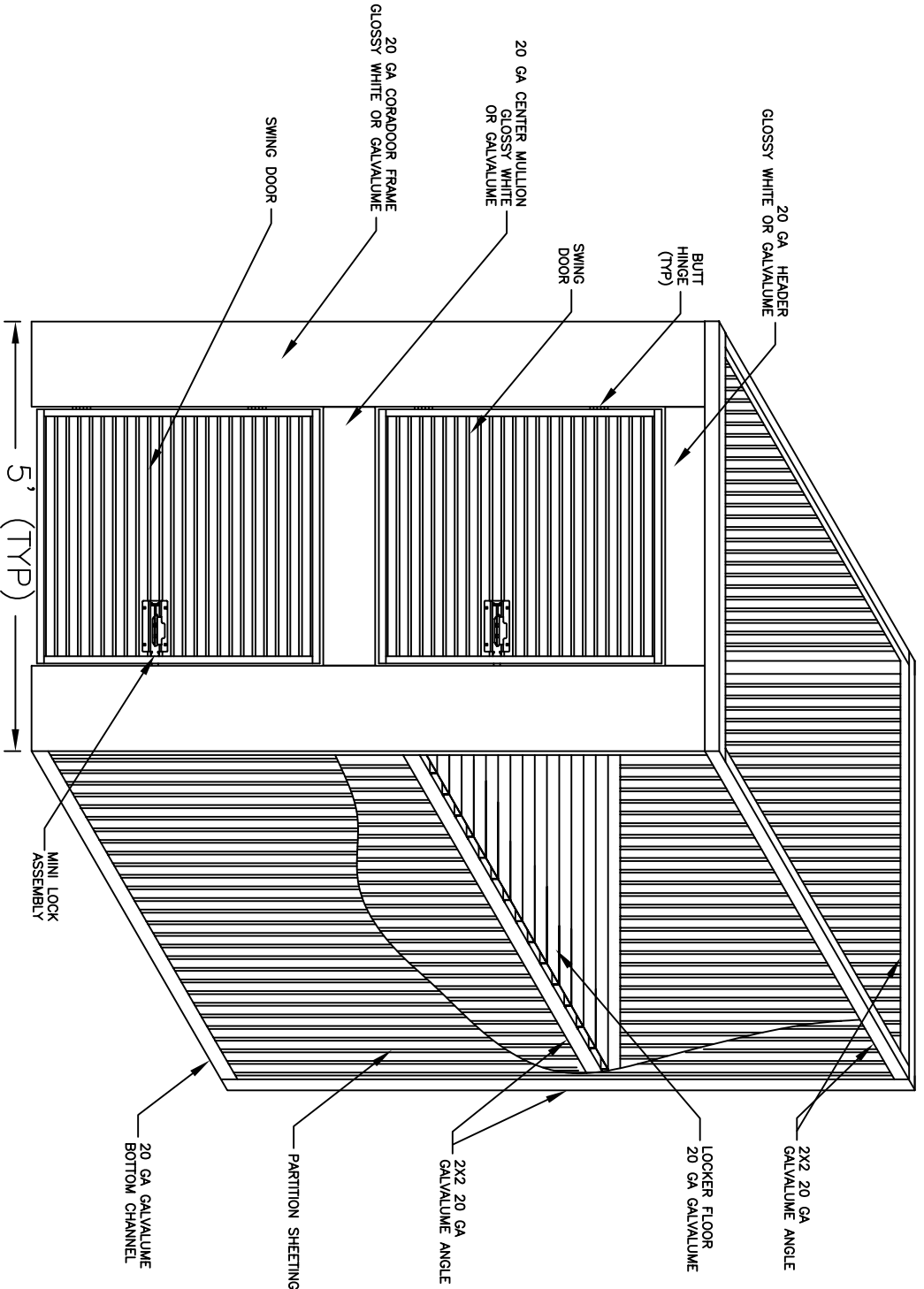


DOORS & BUILDING COMPONENTS
DOUGLASVILLE, GA CHANDLER, AZ HOUSTON, TX
©2001 DBCI ALL RIGHTS RESERVED

**SYSTEM 500 SWING DOOR
INSTALLATION INSTRUCTIONS**

SIZE: **A**
DRAWING NUMBER: **400-961-0006.11**
SCALE: **1:50**

REV.	SHEET	OF
-	11	13




L.H. SWING SHOWN

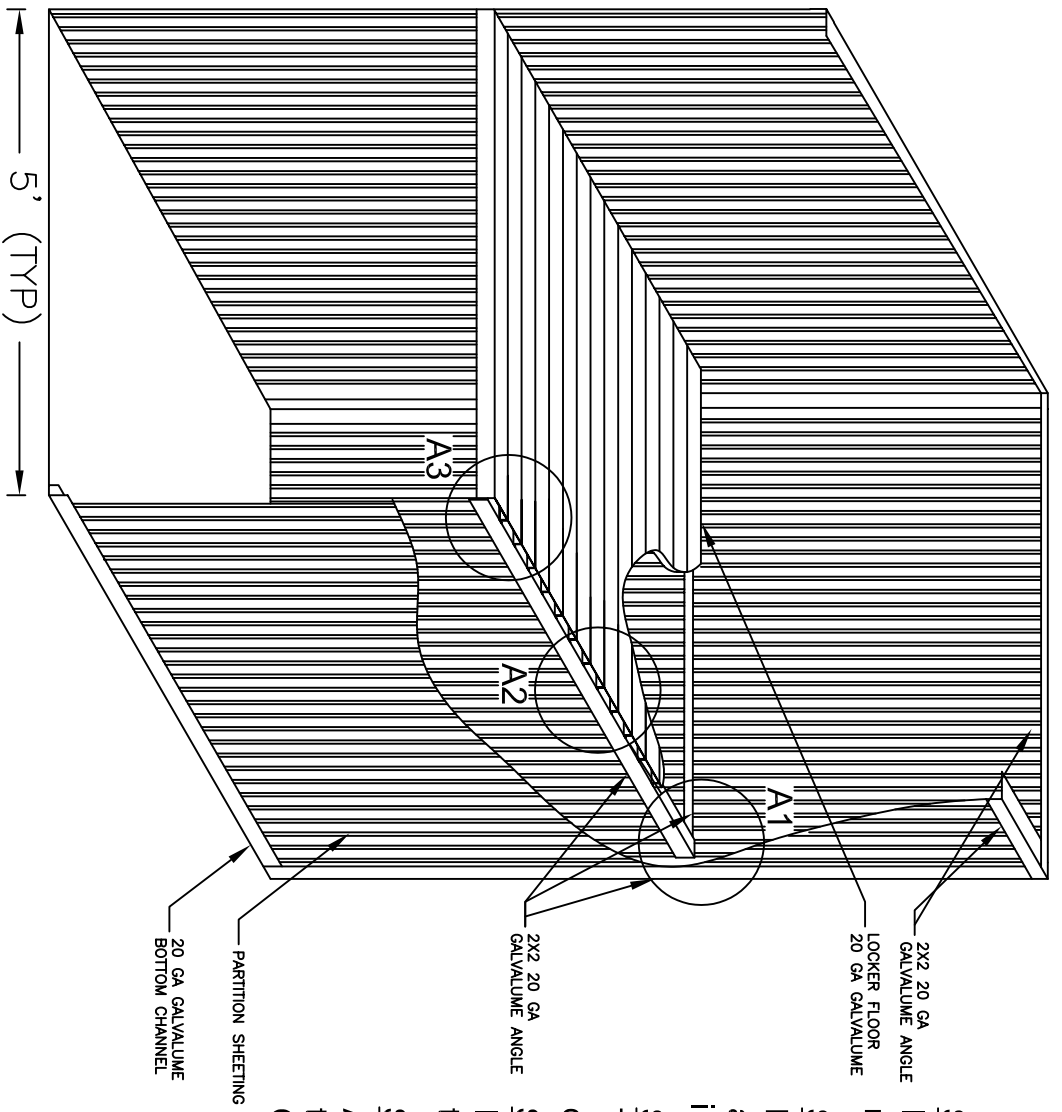


DOORS & BUILDING COMPONENTS
 DOUGLASVILLE, GA CHANDLER, AZ HOUSTON, TX
 ©2001 DBCI ALL RIGHTS RESERVED

SYSTEM 500
LOCKER SYSTEM

APPROVALS		DATE:
DRAWN	L. NALLEY	6/11/03
CHECKED	B. HAMMOND	10/02/03
APPROVED	B. HAMMOND	10/02/03

SIZE	DRAWING NUMBER	REV.
	A-400-961-0006.12	
SCALE:	SHEET 12 OF 13	



STEP #1.1

Install 2" x 2" Galvalume angle to the rear and sides of the locker unit

STEP #1.2

Beginning at the rear of the locker attach the locker floor as detailed in "A2"

STEP #1.3

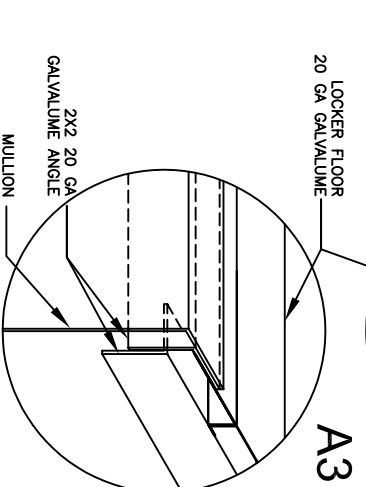
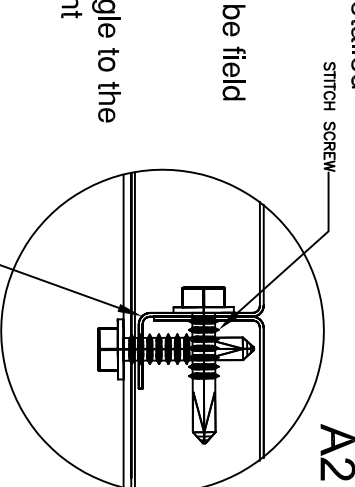
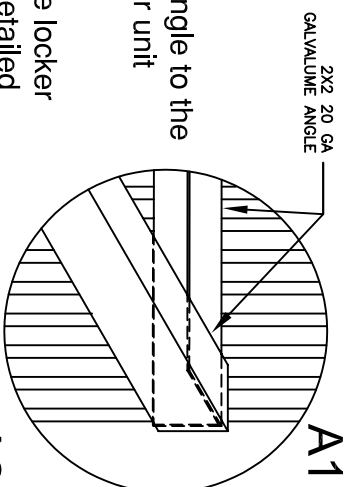
The last floor segment will be field cut to fit the unit depth

STEP #1.4


Install 2"x2" Galvalume angle to the top of the last floor segment

STEP #1.5

Attach mullion to the top of the 2"x2" Galvalume angle




APPROVALS		DATE:
DRAWN	AJS	082803
CHECKED	B HAMMOND	10/02/03
APPROVED	B HAMMOND	10/02/03



DOORS & BUILDING COMPONENTS
 DOUGLASVILLE, GA CHANDLER, AZ HOUSTON, TX
 ©2001 DBCI ALL RIGHTS RESERVED

SYSTEM 500
LOCKER SYSTEM

SIZE	DRAWING NUMBER	REV.
	A-400-961-0006.13	
SCALE:	SHEET 13 OF 13	